

SET MOOD.

QUASAR

Quasar [*Experience light*] We create iconic lighting. Designed to show character. Handmade with timeless materials. Bespoke to suit any space • ~ crafts lighting solutions that stand out. For residential clients, businesses and architects worldwide • We are proud to be part of a tradition of iconic lighting design. ~ is a family business from Holland, with 30 years of experience in lighting. We collaborate with outspoken designers, who use timeless esthetics to make true lighting statements • Each product is handmade, with robust materials like aluminium, bronze and glass • To us, lighting is about more than illumination. It's about personality. Not just in the lighting fixture itself, but in the space it inhabits • ~ Experience light.



4 QUASAR

GRID

by Daniel Becker

In this phenomenal light sculpture, star-shaped light tubes intersect with metal lines.
The Grid will illuminate any space, whether it is modern or classic.



QUASAR 5





QUASAR 7

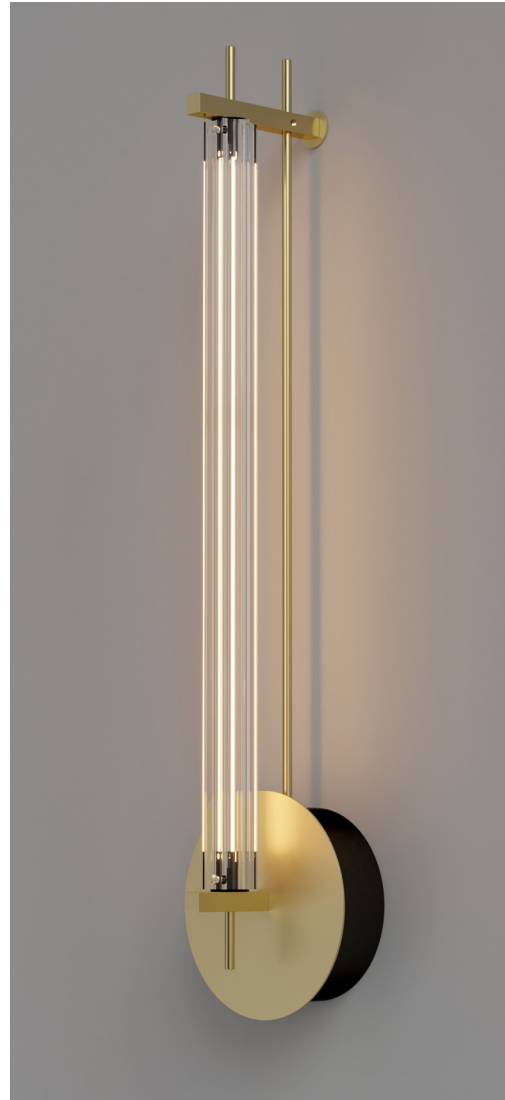


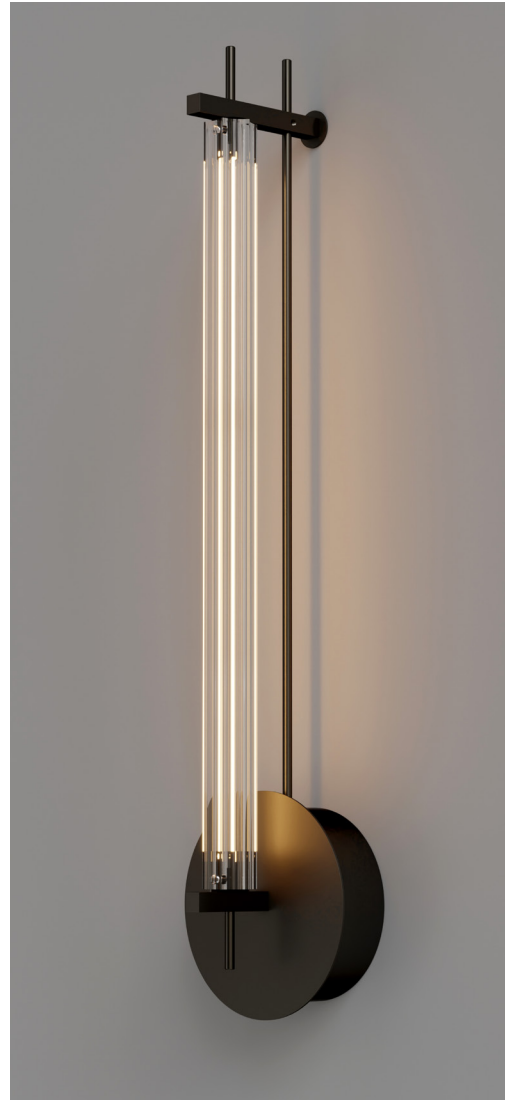
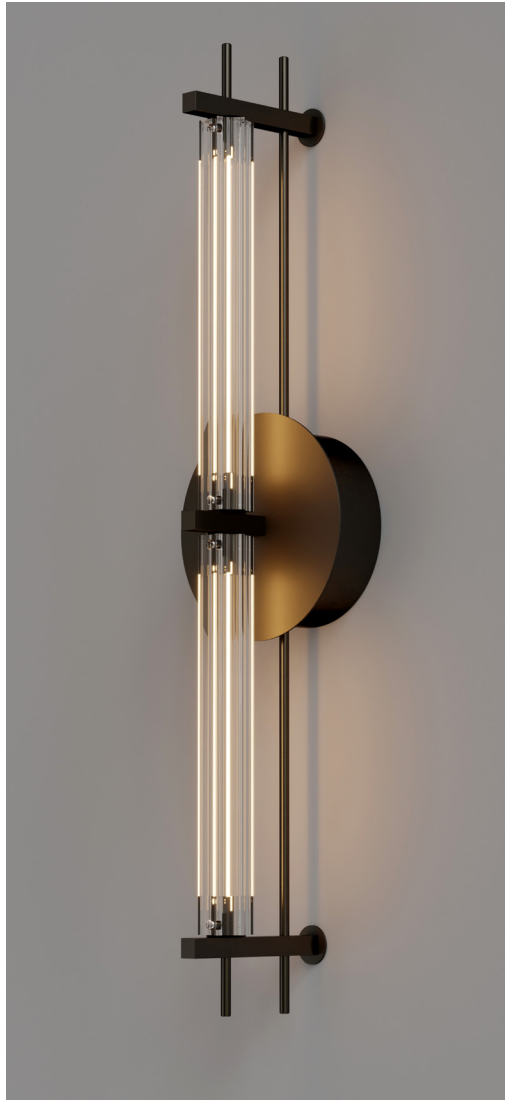
8 QUASAR













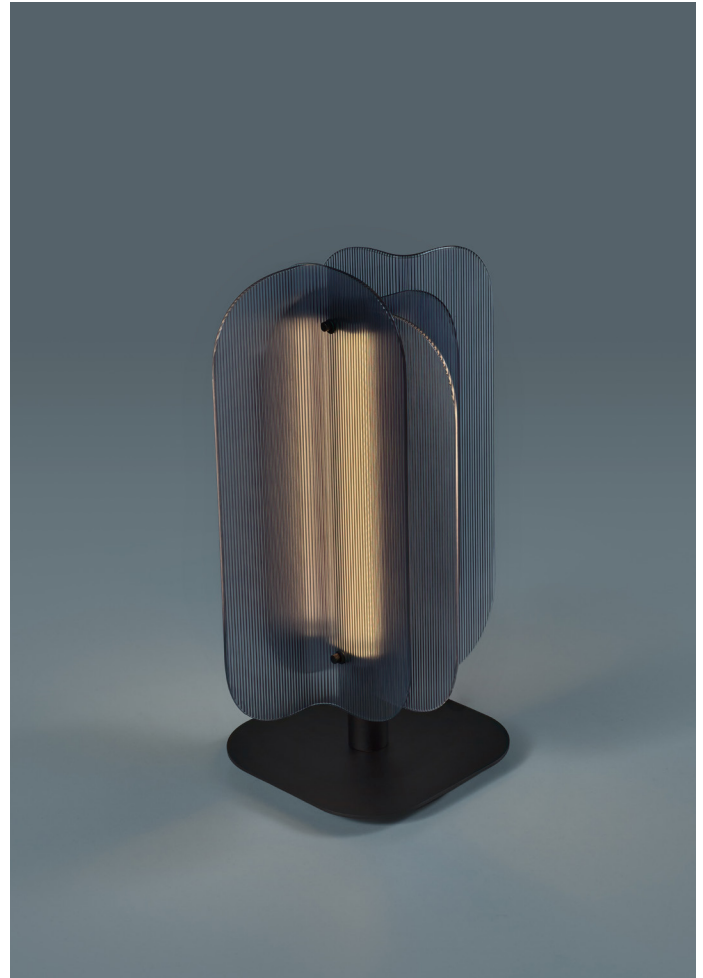
FOLD

by Hoffmann Kahleiss Design

Mysterious angles in a rotated position make the Fold unique. The angles are made of thin ribbed glass and are available in various colours.













20 QUASAR

COSMOS SQUARE WITH DROPS

by Jan Pauwels

Illuminating drops fall out of the Cosmos.

By playing with heights this modular version of the Cosmos becomes modern and frivolous.

The circuit boards have leds on both sides. 2/3 of the light down and 1/3 up.



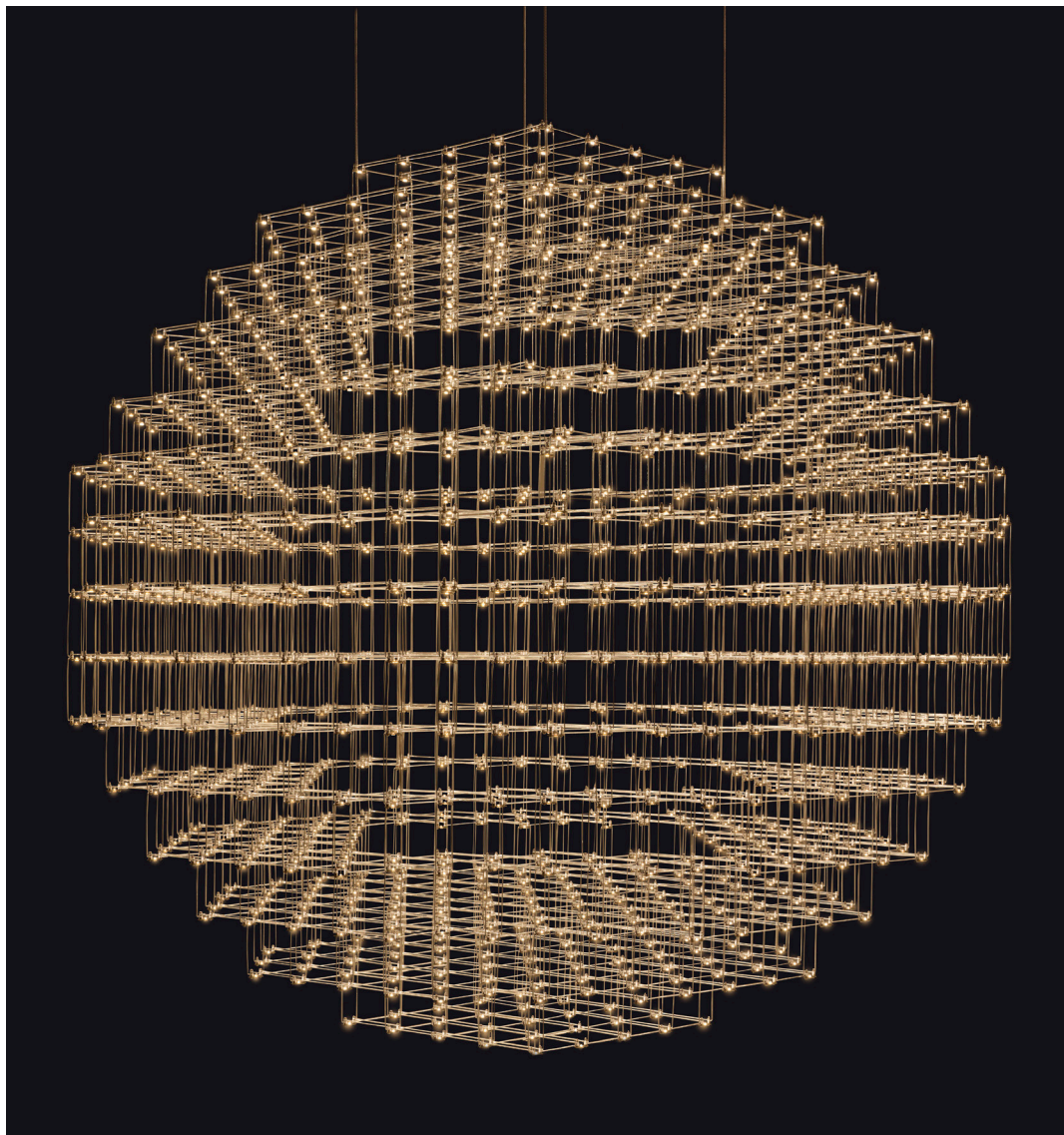


PIXEL SPHERE

by Jan Pauwels

All pixels combined forming a round shape.

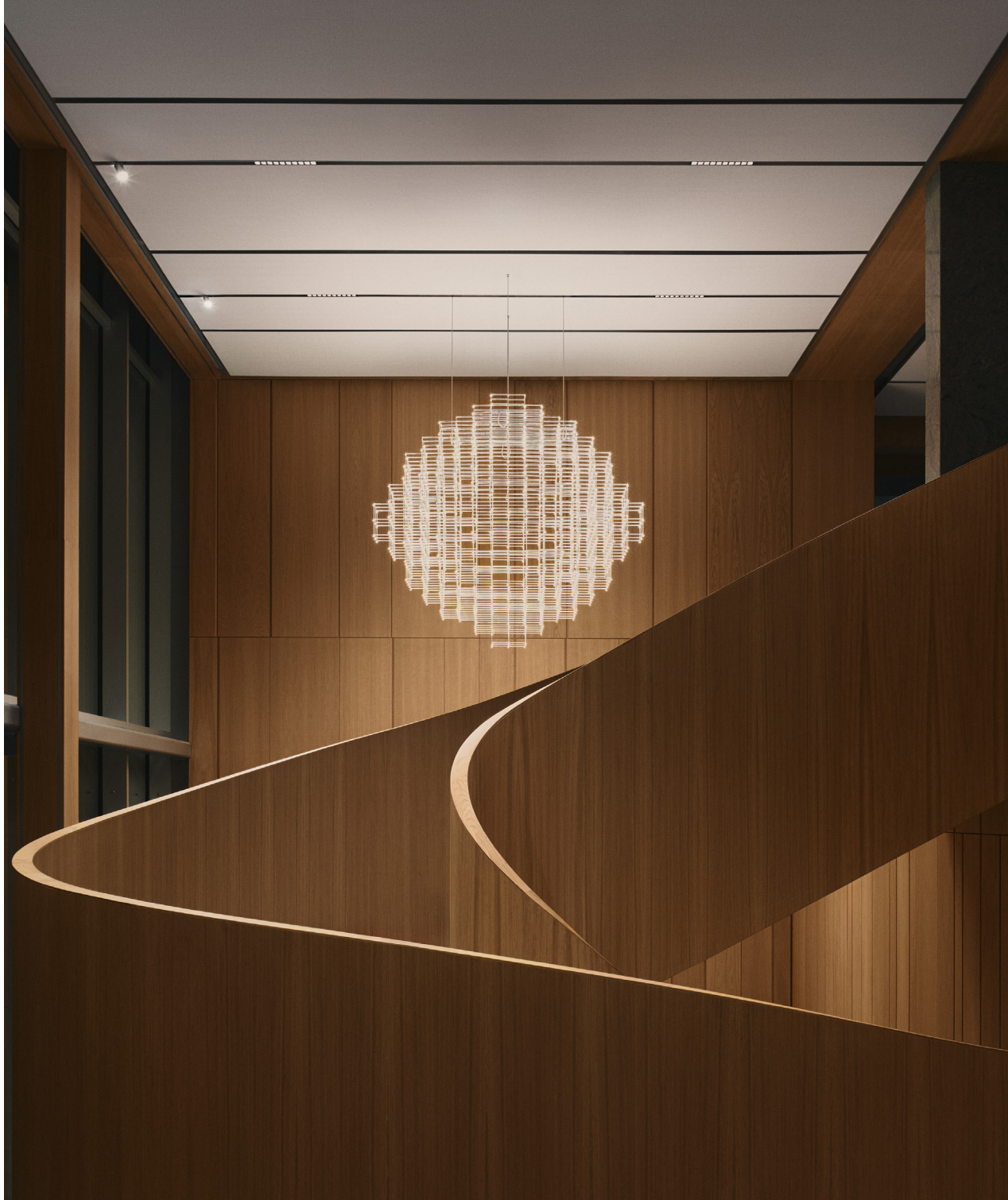
The circuit boards have leds on both sides. 2/3 of the light down and 1/3 up.













FRAME

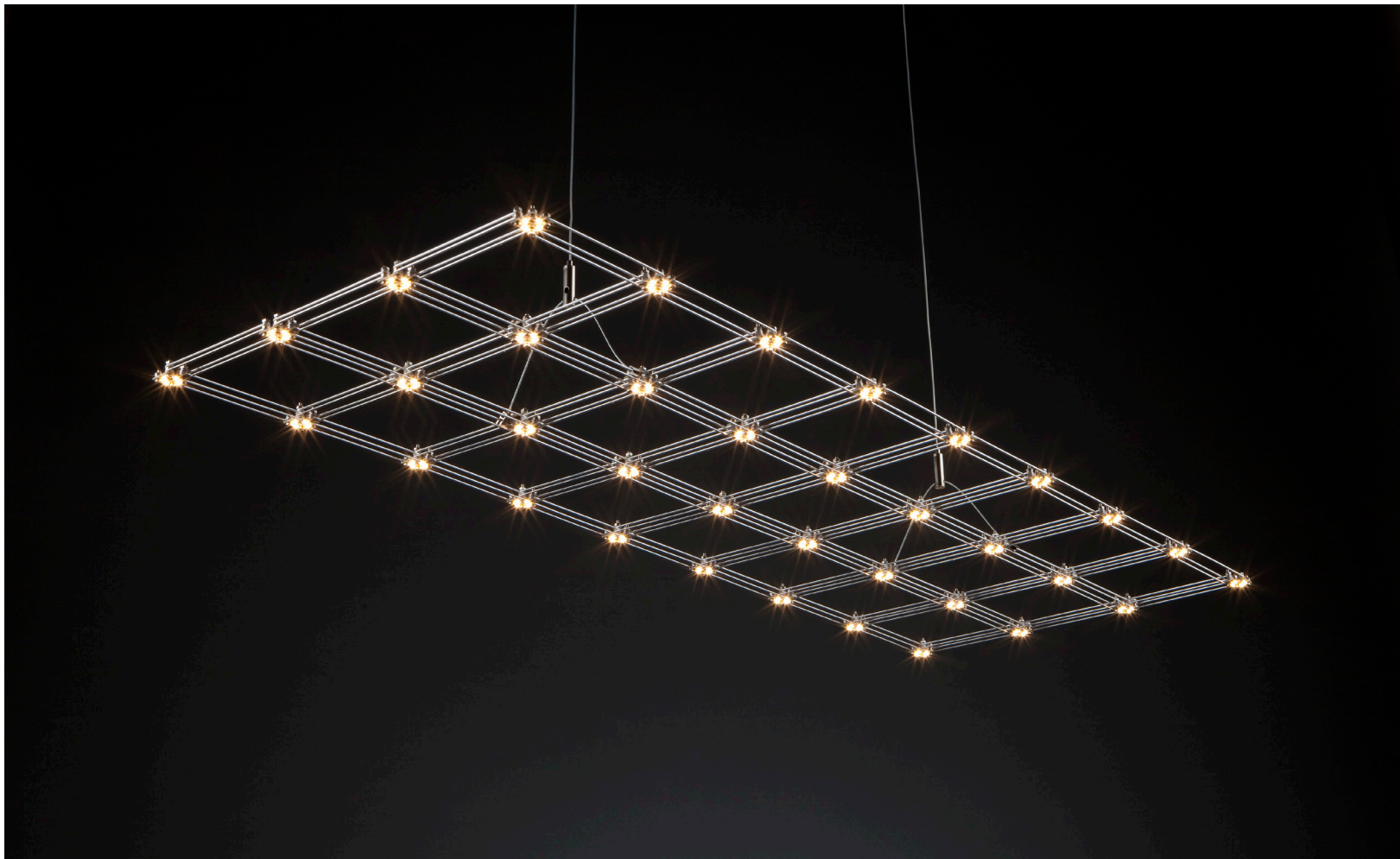
by Jan Pauwels

Strong and characteristic light frame.

Led circuit boards and tiny metal rods are the only two basic elements of this light fixture.

They give the fixture its structure and shape.

The circuit boards have leds on both sides. 2/3 of the light down and 1/3 up.





SPECTRE

by Jan Pauwels

Various halorings visible on a cloudy day. An asymmetric composition of various rings but completely in balance.
The circuit boards have leds on both sides. 2/3 of the light down and 1/3 up.





POLLUX

by Jan Pauwels

Pollux looks structured but still harmonious.

Modular placed led circuit boards and tiny metal rods are the only two basic elements of this light fixture.

They give the lamp its structure and shape. The shape is totally irregular and asymmetrical.

The circuit boards have leds on both sides. 2/3 of the light down and 1/3 up.









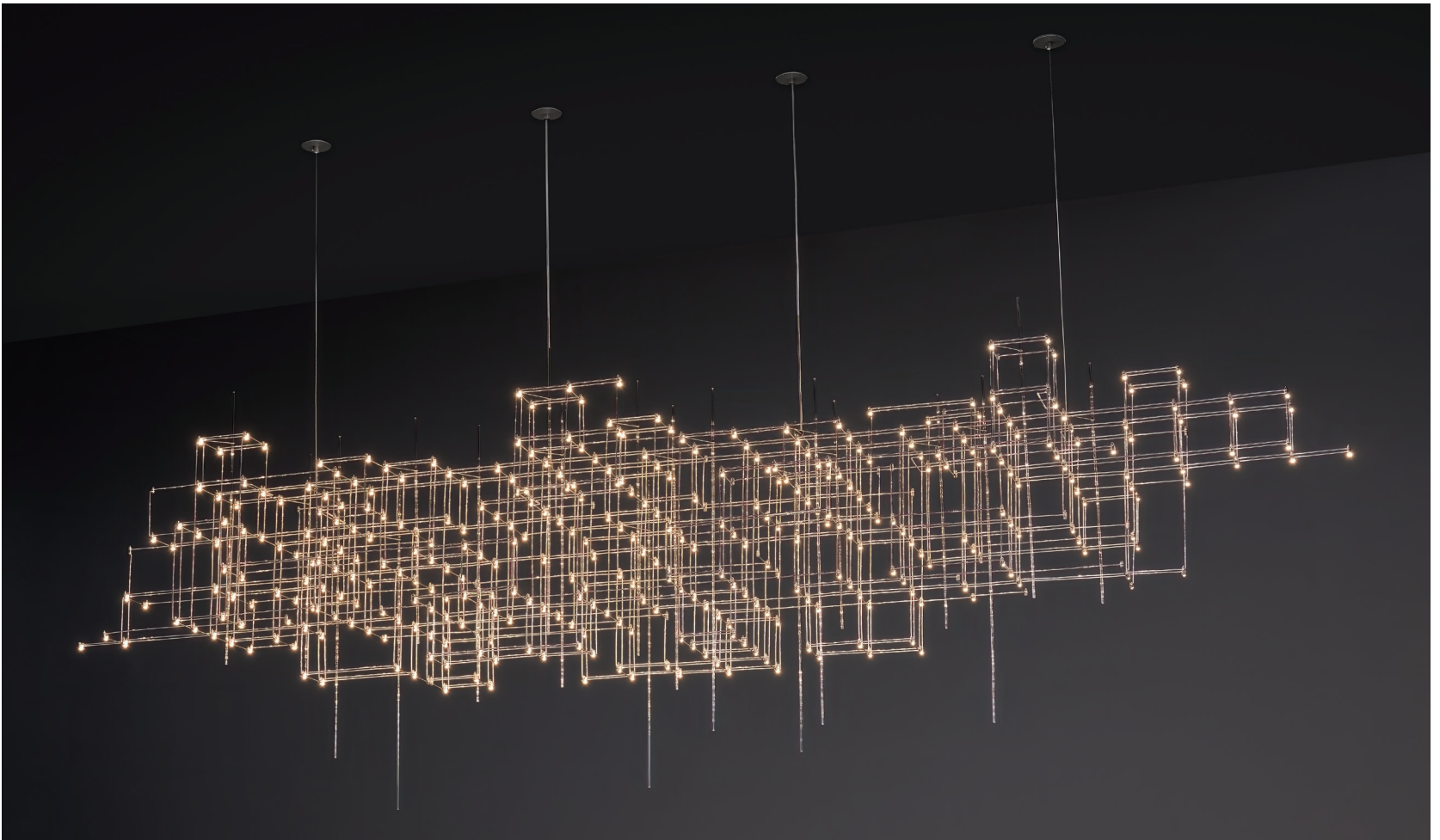


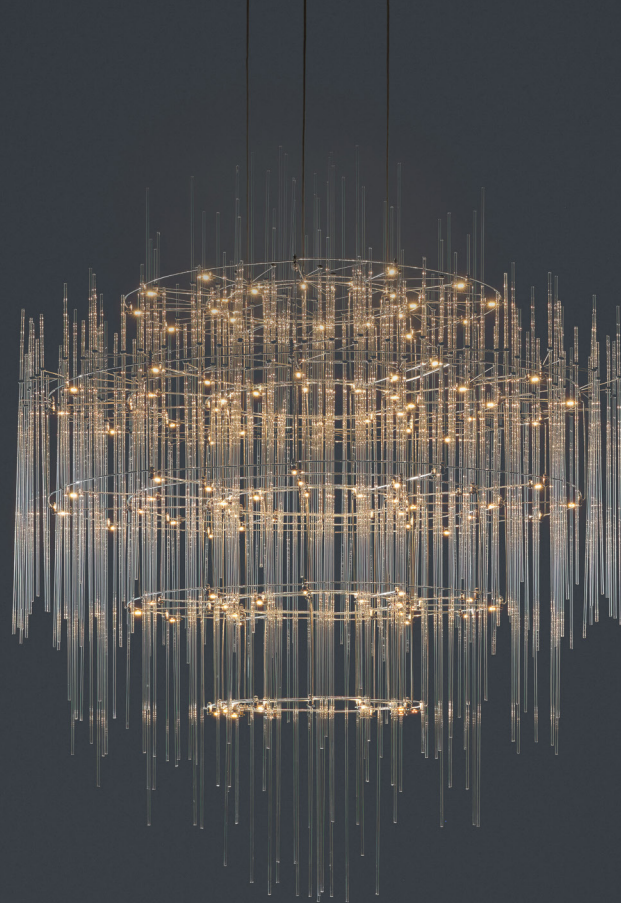


PARKES

by Jan Pauwels

All views of the Parkes are different. Asymmetrical but in balance.
Modular placed led circuit boards and tiny metal rods are the only two basic elements of this light fixture.
They give the lamp its structure and shape. The shape is totally irregular and asymmetrical.
The circuit boards have leds on both sides. 2/3 of the light down and 1/3 up.





SKYFALL

by Jan Pauwels

Imagine looking up at the stars through raindrops that are frozen in time. The metal rods and the tiny sparkling glasstubes create this cosmic sculpture. The circuit boards have leds on both sides. 2/3 of the light down and 1/3 up.





March 2026

QUASAR holland BV[®]

Burgstraat 2 4283 GG Giessen The Netherlands
info@quasar.nl www.quasar.nl