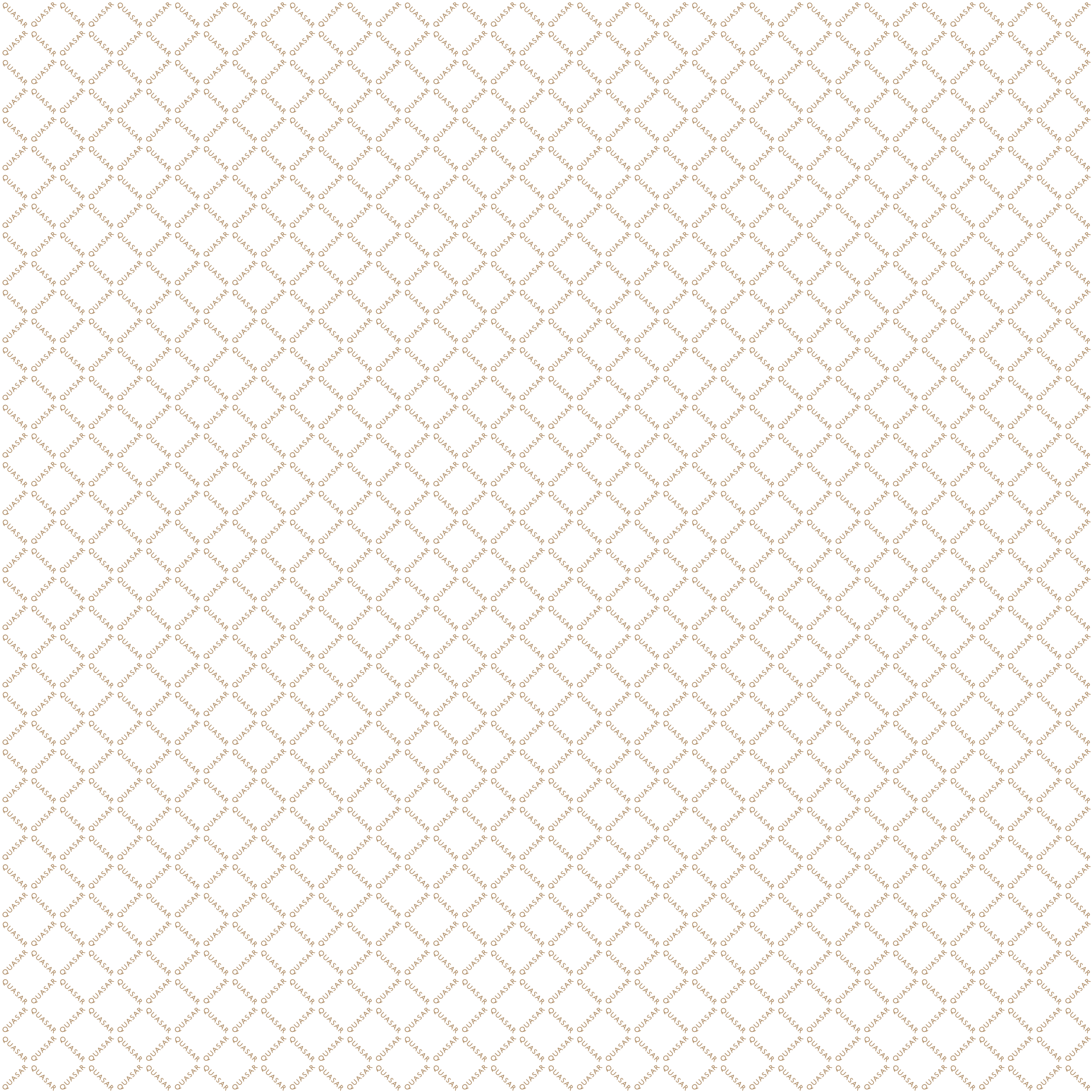
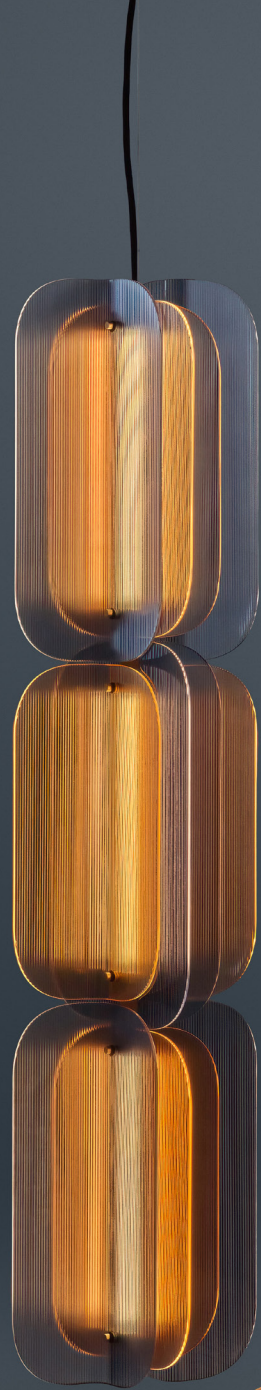


PIXEL IT.

QUASAR



Quasar [*Experience light*] We create iconic lighting. Designed to show character. Handmade with timeless materials. Bespoke to suit any space • ~ crafts lighting solutions that stand out. For residential clients, businesses and architects worldwide • We are proud to be part of a tradition of iconic lighting design. ~ is a family business from Holland, with 30 years of experience in lighting. We collaborate with outspoken designers, who use timeless esthetics to make true lighting statements • Each product is handmade, with robust materials like aluminium, bronze and glass • To us, lighting is about more than illumination. It's about personality. Not just in the lighting fixture itself, but in the space it inhabits • ~ Experience light.



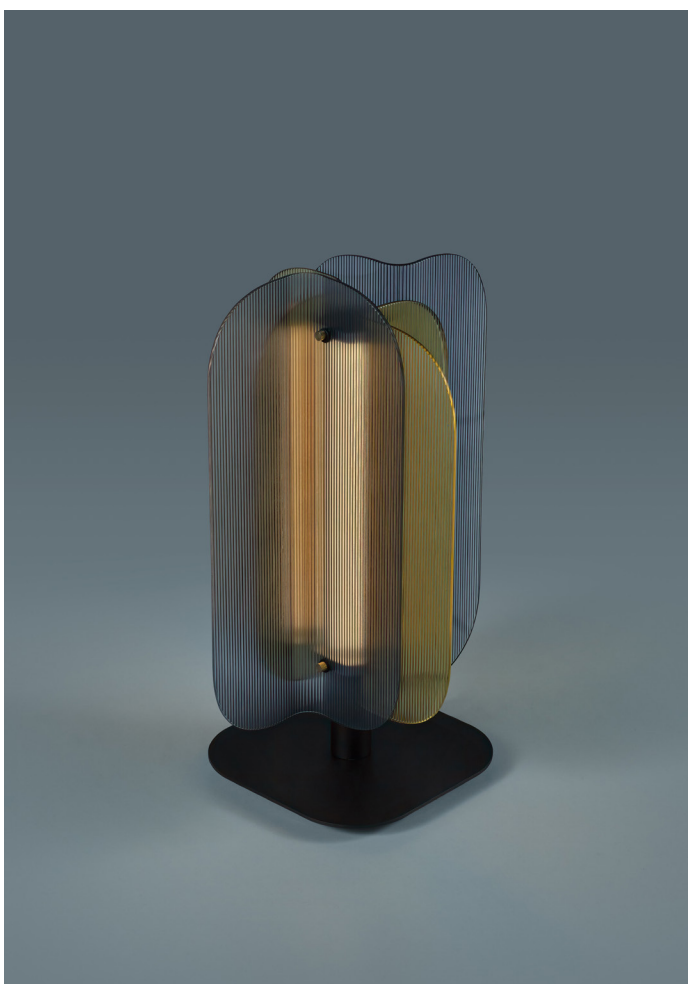
FOLD

by Hoffmann Kahleyss Design

Mysterious angles in a rotated position make the Fold unique. The angles are made of thin ribbed glass and are available in various colours.



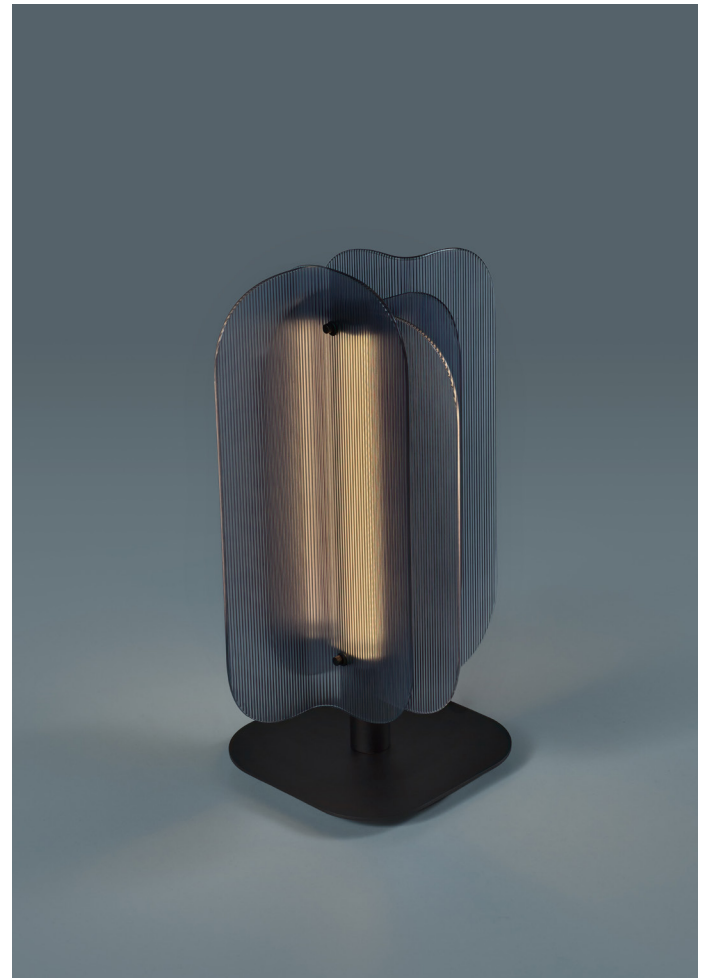
QUASAR 5



FOLD

by Hoffmann Kahleyss Design

Mysterious angles in a rotated position make the Fold unique.
The angles are made of thin ribbed glass and are available in various colours.





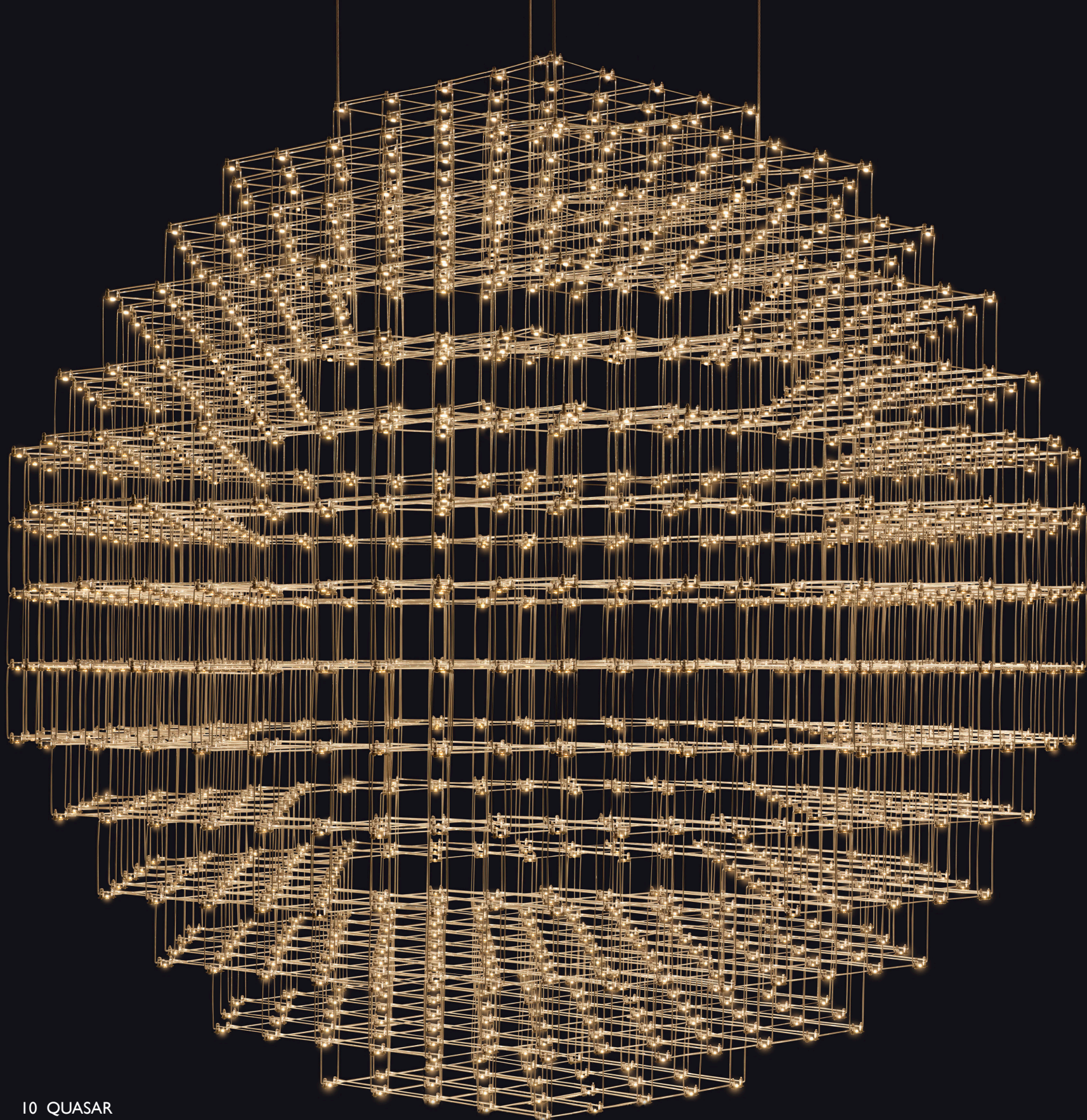
FOLD

by Hoffmann Kahleyss Design

Mysterious angles in a rotated position make the Fold unique.
The angles are made of thin ribbed glass and are available in various colours.



QUASAR 9



10 QUASAR

PIXEL SPHERE

by Jan Pauwels

All pixels combined forming a round shape.

The circuit boards have leds on both sides. $\frac{2}{3}$ of the light goes down and $\frac{1}{3}$ goes up.





12 QUASAR

GRID

by Daniel Becker

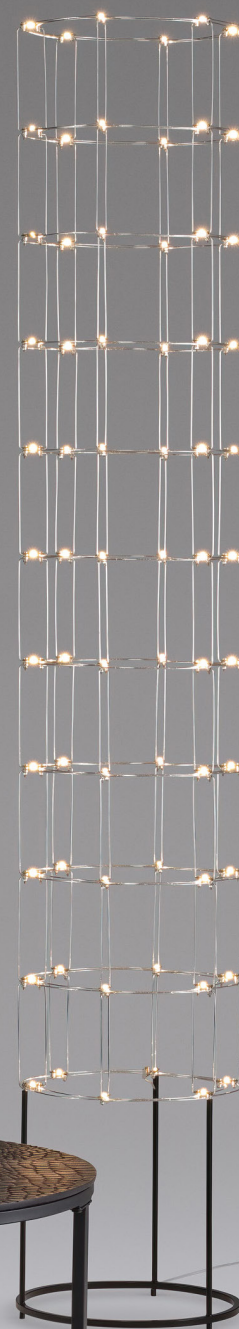
In this phenomenal light sculpture, star-shaped light tubes intersect with stainless steel lines.
This huge 3D grid will illuminate any space, whether it is modern or classic.







QUASAR 15



TUBE FLOOR

by Jan Pauwels

This slim tunnel of light gives a luxurious feeling and will suit every interior.



MOONLIGHT

by Hoffmann Kahleyss Design

A stunning ambiance is created by the magnificent Moonlight.

Use as a single pendant or combine the two available sizes and multiple finishes to create your own imposing feature.

The clever use of materials gives the light a luxurious, yet mysterious aura.



MOONLIGHT WALL

by Hoffmann Kahleyss Design

Choose either the symmetrical or a-symmetrical wall lamp.
Your room will subtly be enhanced by adding this beautiful decorative,
though functional piece.





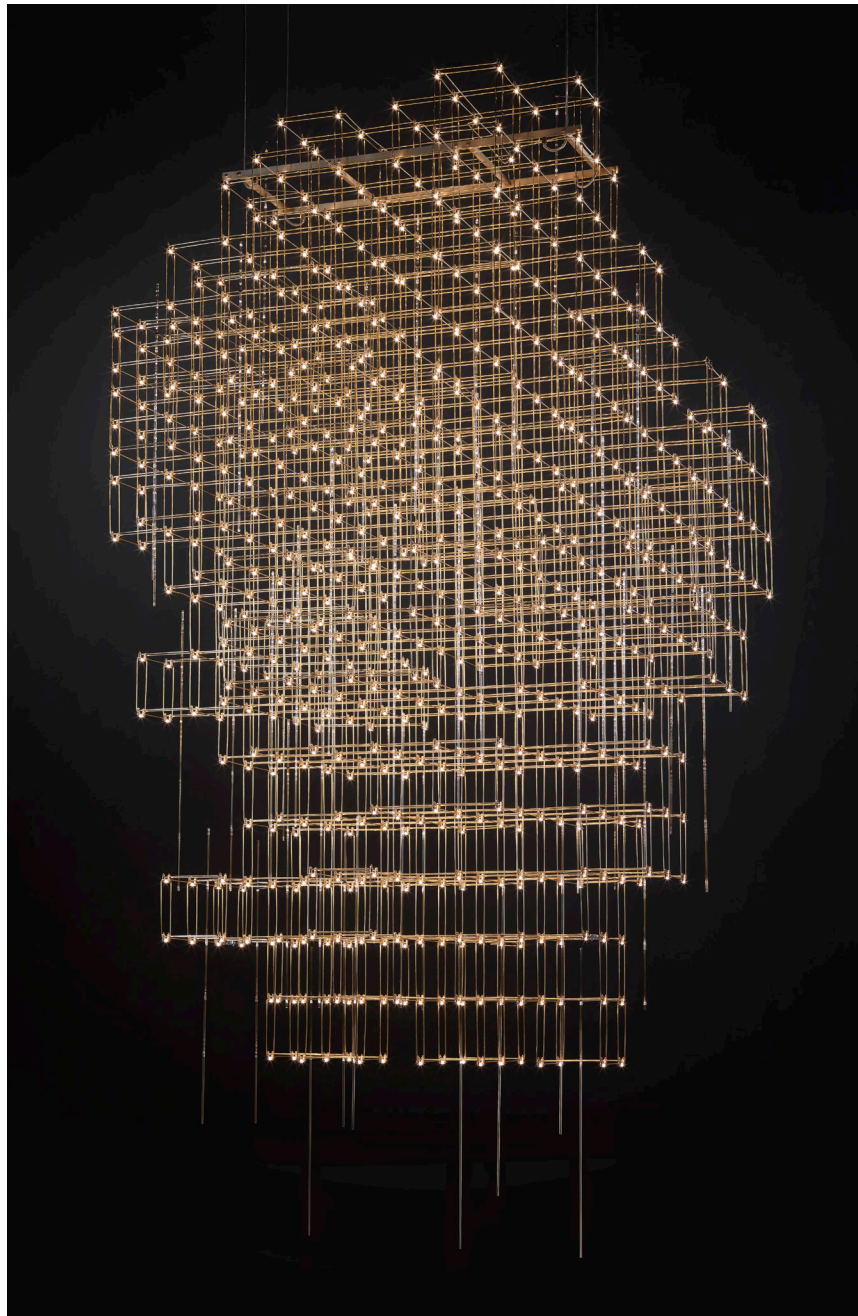
POLLUX

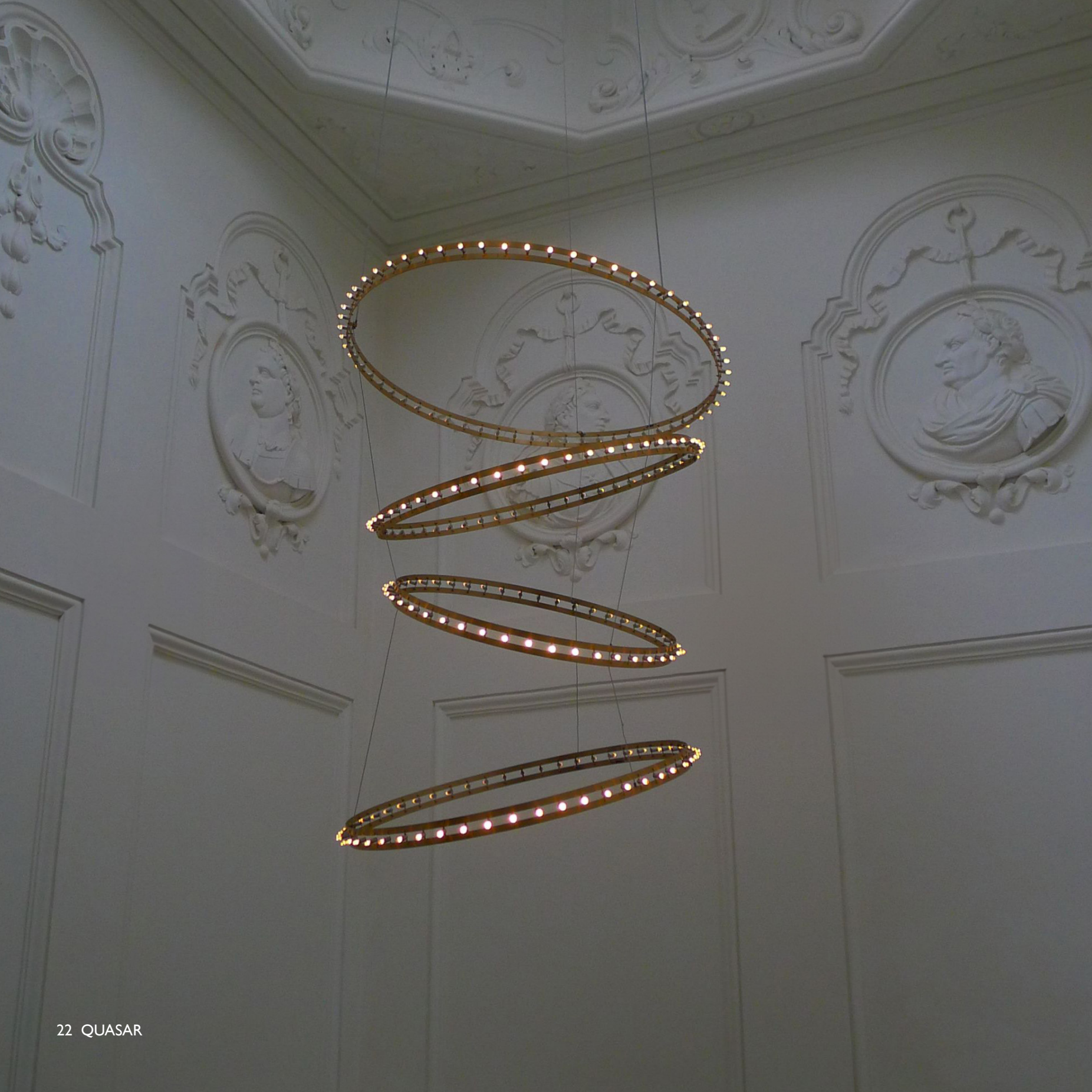
by Jan Pauwels

Pollux looks structured but still harmonious.

Modular placed LED circuit boards and tiny metal rods are the only two basic elements of this light fixture.

They give the lamp its structure and shape. The shape is totally irregular and asymmetrical.





CITADEL

by Jan Pauwels

The circle of light. Versatile rings that allow you to create the composition you like. Thanks to the freedom of number, size, distance and angle between the rings, each installation will be unique.



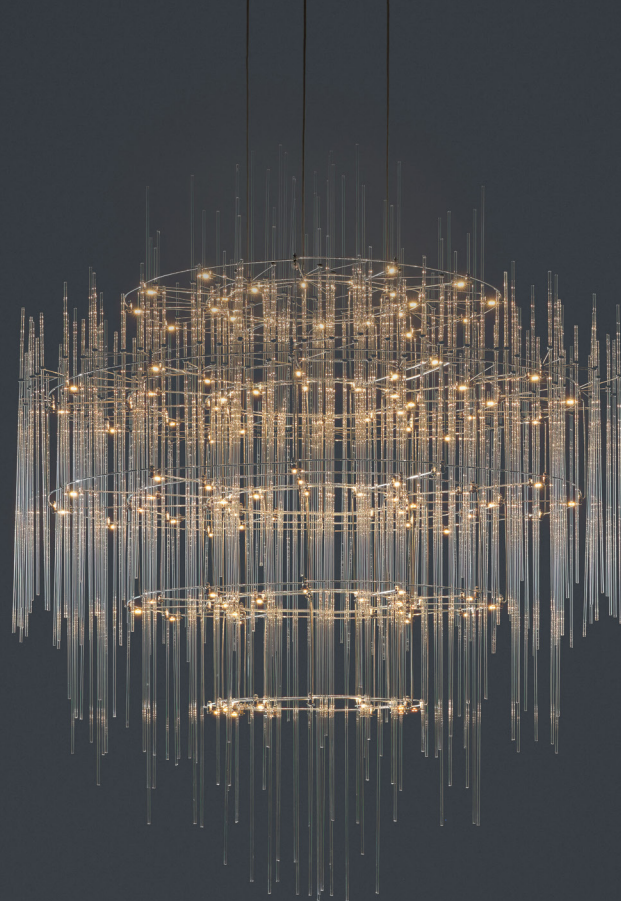


COSMOS SQUARE FLOOR

by Jan Pauwels

As an extension of the Cosmos Square series. A very subtle frame is carrying the light sculpture without affecting its unique appearance. Perfect in an open space, in front of a wall or in a corner.





SKYFALL

by Jan Pauwels

Imagine looking up at the stars through raindrops that are frozen in time. The metal rods and the tiny sparkling glasstubes create this cosmic sculpture.





LUM LEATHER

by Estefania Johnson

Creating illuminating walls.

Using basic panels and light panels make it possible to create different design configurations according to the easthetical and illuminating need of space.



COSMOS GLOBE FLOOR

by Jan Pauwels

As an extension of the Cosmos Globe series. A very subtle frame is carrying the light sculpture without affecting its unique appearance. Perfect in an open space, in front of a wall or in a corner.



TESS FLOOR

by Jan Pauwels

As an extension of the Tess series. A very subtle frame is carrying the light sculpture without affecting its unique appearance. Perfect in an open space, in front of a wall or in a corner.





SPY

by Jan Pauwels

The luxurious atmosphere of the past in a new configuration.

Symmetrical circles in a conical shape.





COSMOS

by Jan Pauwels

Cosmos looks random but still harmonious.

Random placed LED circuit boards and tiny metal rods are the only two basic elements of this light fixture.

They give the lamp its structure and shape. The shape is totally irregular and asymmetrical.





APPLE MOOD GOLD (SMALL)

by Malika Novi

In addition to the standard Apple Mood (Small).

A coloured apple shaped glass with a solid shiny golden coloured core.





PHILAE

by Jan Pauwels

Autumn storm, falling leaves, make any combination you like.

By playing with the length of the cables, and the number and sizes, you can create your own lighting installation.





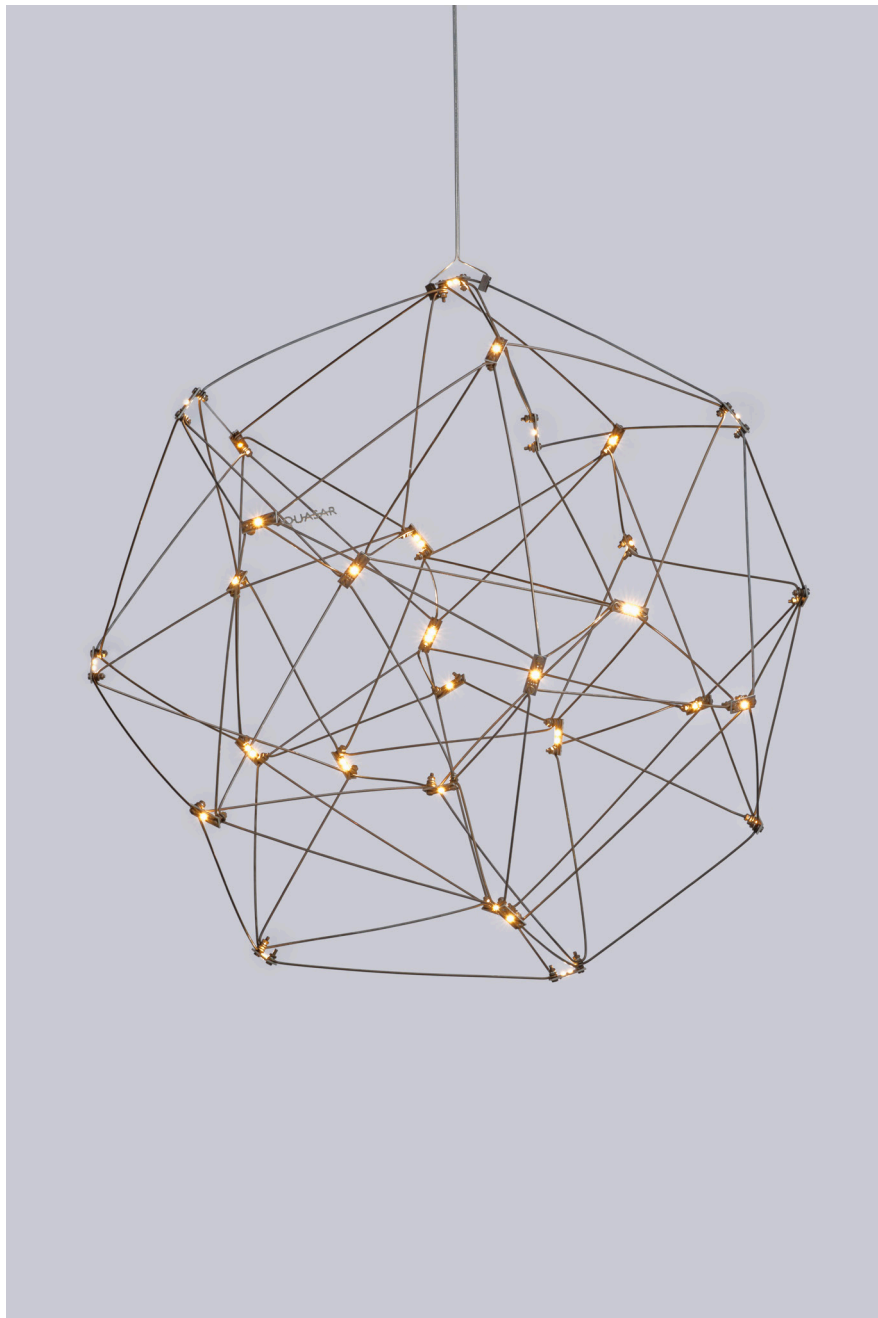
COSMOS GLOBE

by Jan Pauwels

Cosmos Globe looks random but still harmonious.

Random placed LED circuit boards and tiny metal rods are the only two basic elements of this light fixture.

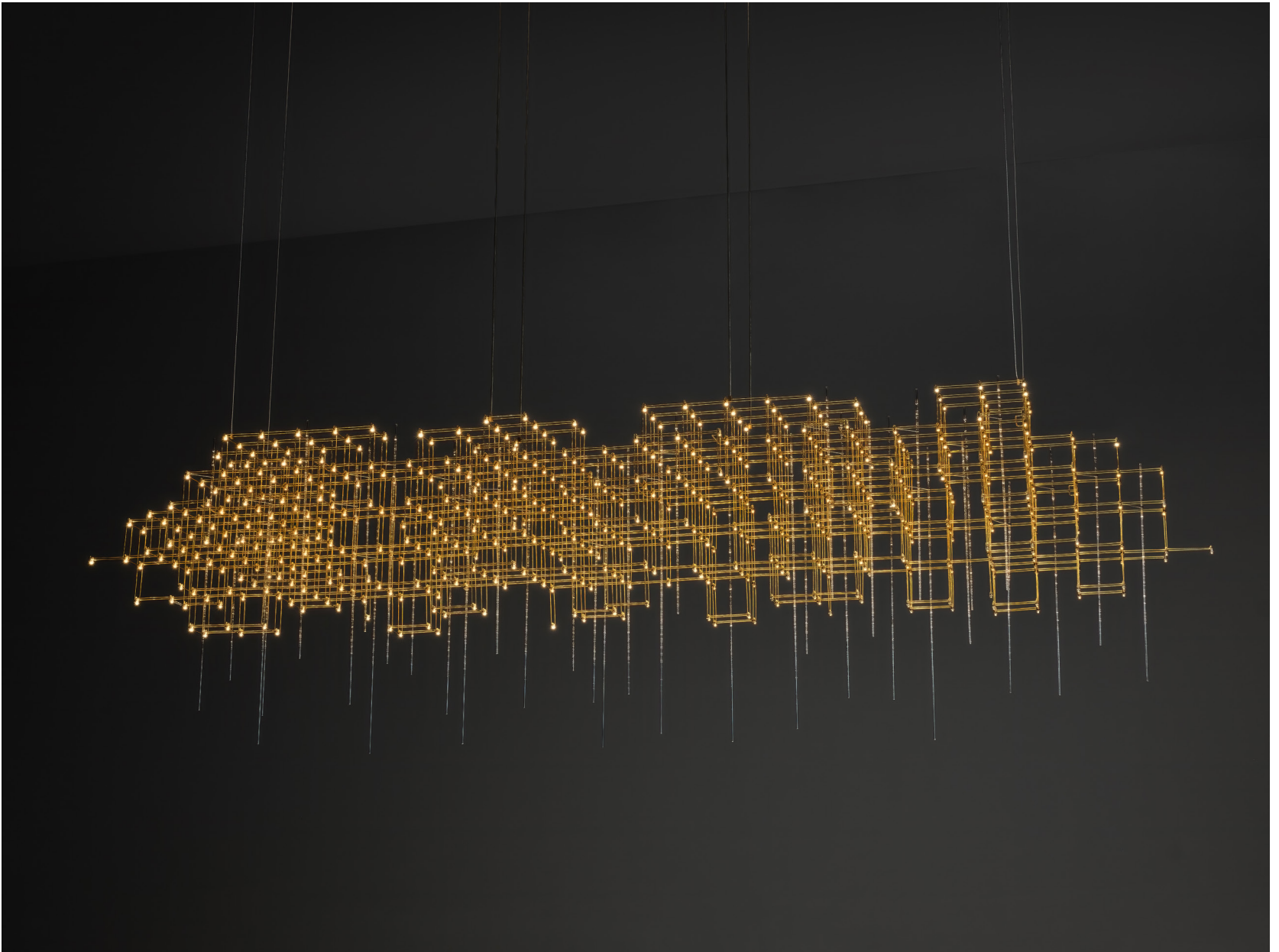
They give the lamp its structure and shape.



PARKES

by Jan Pauwels

All views of the Parkes are different. A-symmetrical but in balance.



Contributors

Page 8

Van der Donk

designmeubels.nl

Page 20

Mohd, Milan

mohd.it

Page 22

Paleis Hof

vtwonen.nl

Page 32

Vtwonen

rublek.com

page 34

Guerilla Games / Studio Rublek

kruidenenjasmijn.nl

Page 38

Kruiden en Jasmijn



March 2025

QUASAR holland BV®

Burgstraat 2 4283 GG Giessen The Netherlands
info@quasar.nl www.quasar.nl