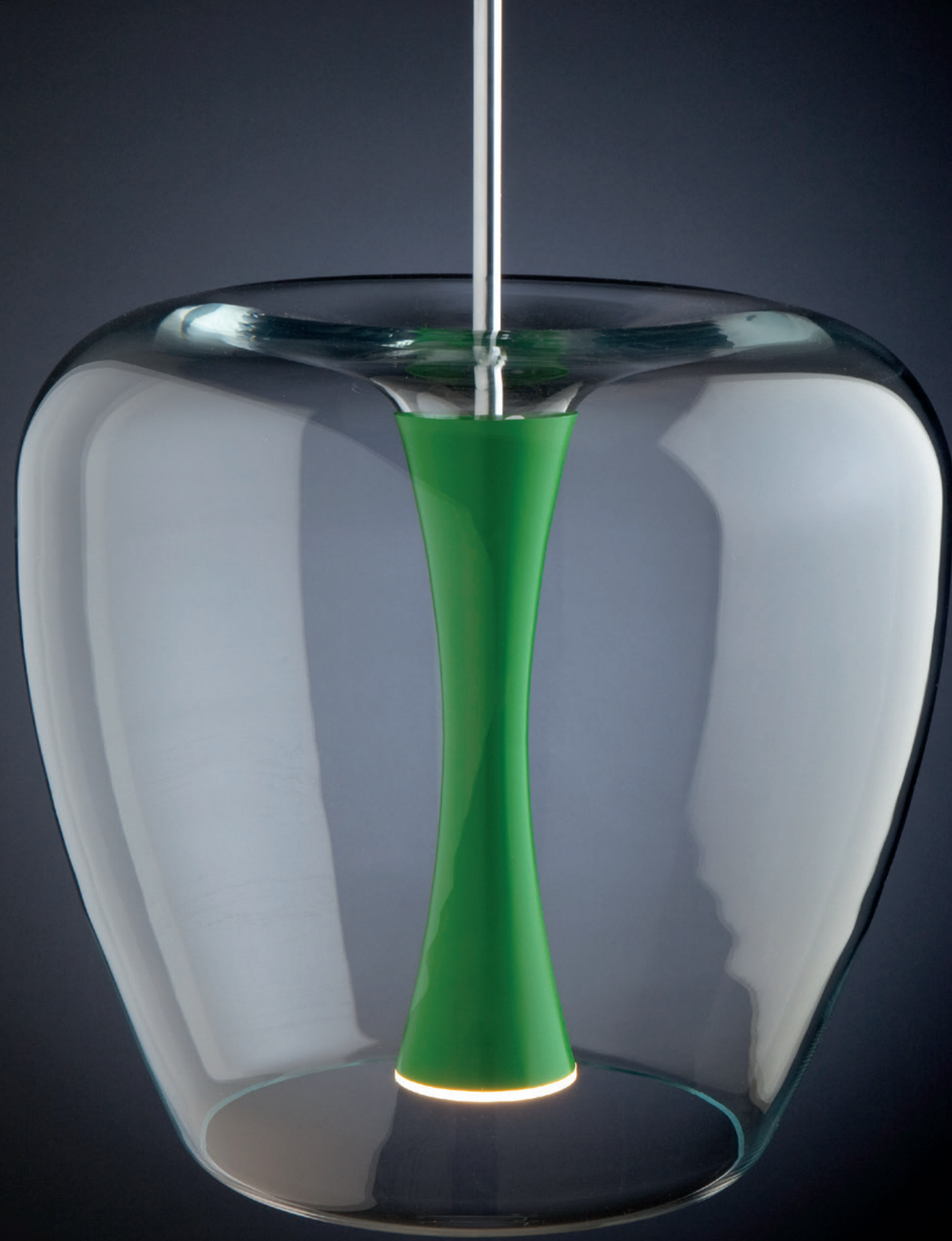




ABOUT **Apple Mood** by Malika Novi

The natural beauty of the apple. A transparent apple shaped glass with a solid aluminium core. Available in 2 sizes and many finishes.



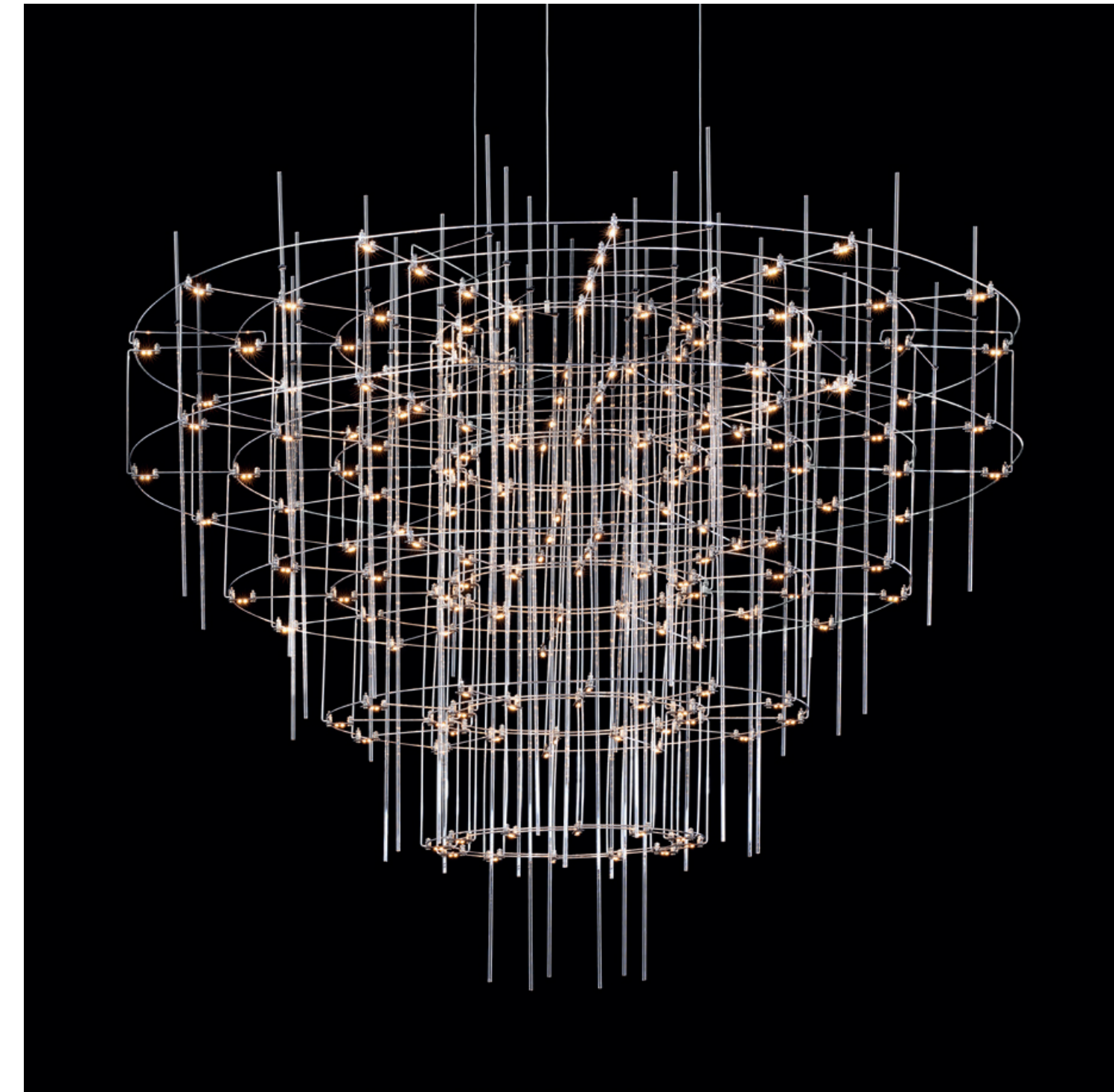
ABOUT **Apple Mood small** by Malika Novi
The small version of the Apple Mood. Mix & match by using multiple colours.





ABOUT **Spy** by Jan Pauwels

The luxurious atmosphere of the past in a new configuration.
Symmetrical circles in a conical shape. The circuit boards have
leds on both sides. 2/3 of the light goes down and 1/3 goes up.



ABOUT Raven by Jan Pauwels

A rollercoaster of light, create your favourite ride. Unroll the lightway and put the bases in the preferred position or mount them to the wall or shelf. Click the magnetic end caps to each base. Shape can be changed as often as you wish.

This fixture is supplied with a 220V USB plug. If you prefer to use Raven on places without electricity you can use any type of powerbank.





ABOUT Citadel Composition by Jan Pauwels

The circle of light. Versatile rings that allow you to create the composition you like. Thanks to the freedom of number, size, distance and angle between the rings, each installation will be unique.



ABOUT **Cosmos** by Jan Pauwels

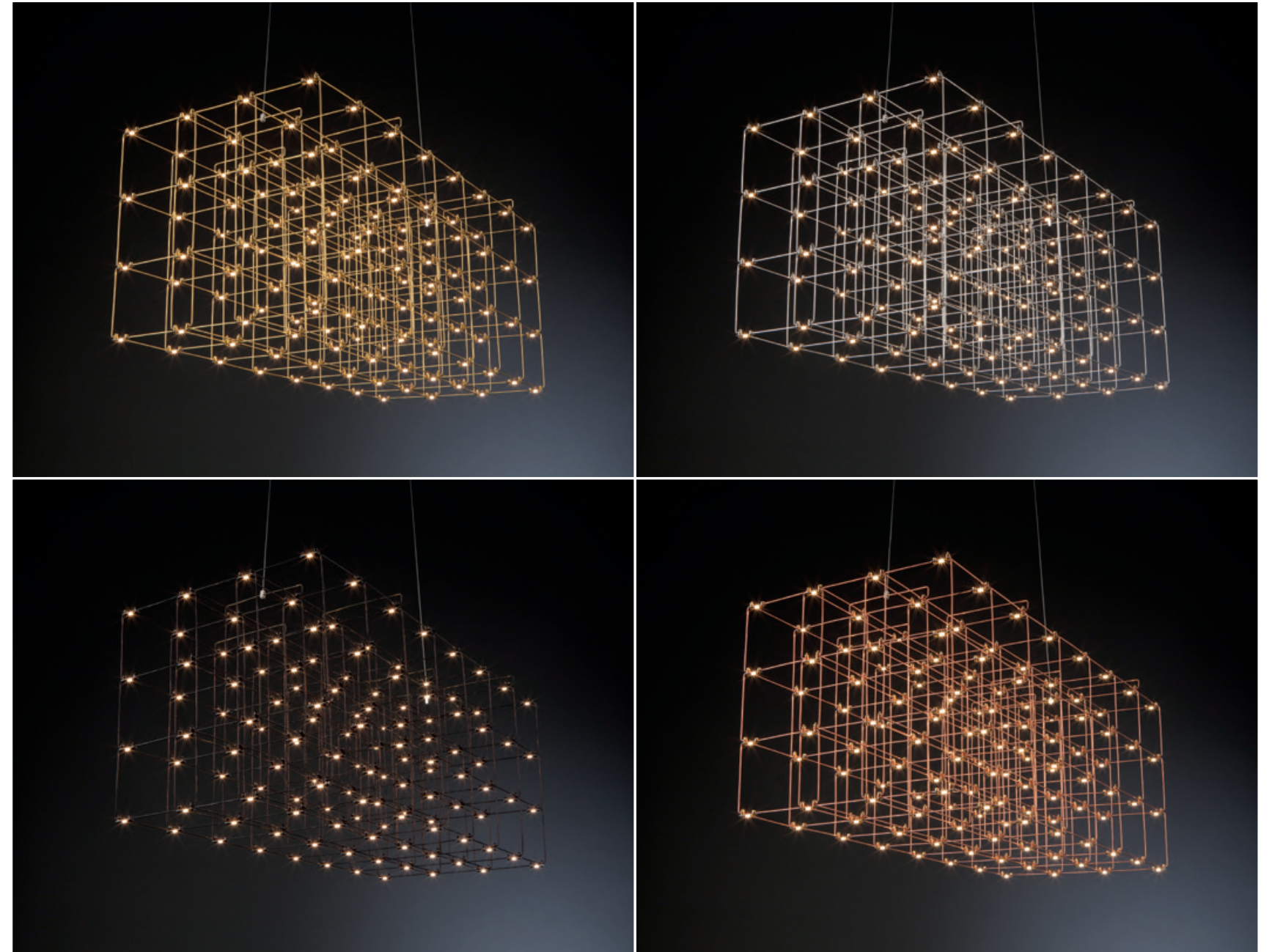
Cosmos looks random but still harmonious. Random placed LED circuit boards and tiny metal rods are the only two basic elements of this light fixture. They give the lamp its structure and shape.





ABOUT Cosmos Square by Jan Pauwels

Cosmos Square looks structured but still harmonious. Modular placed LED circuit boards and tiny metal rods are the only two basic elements of this light fixture. They give the lamp its structure and shape.

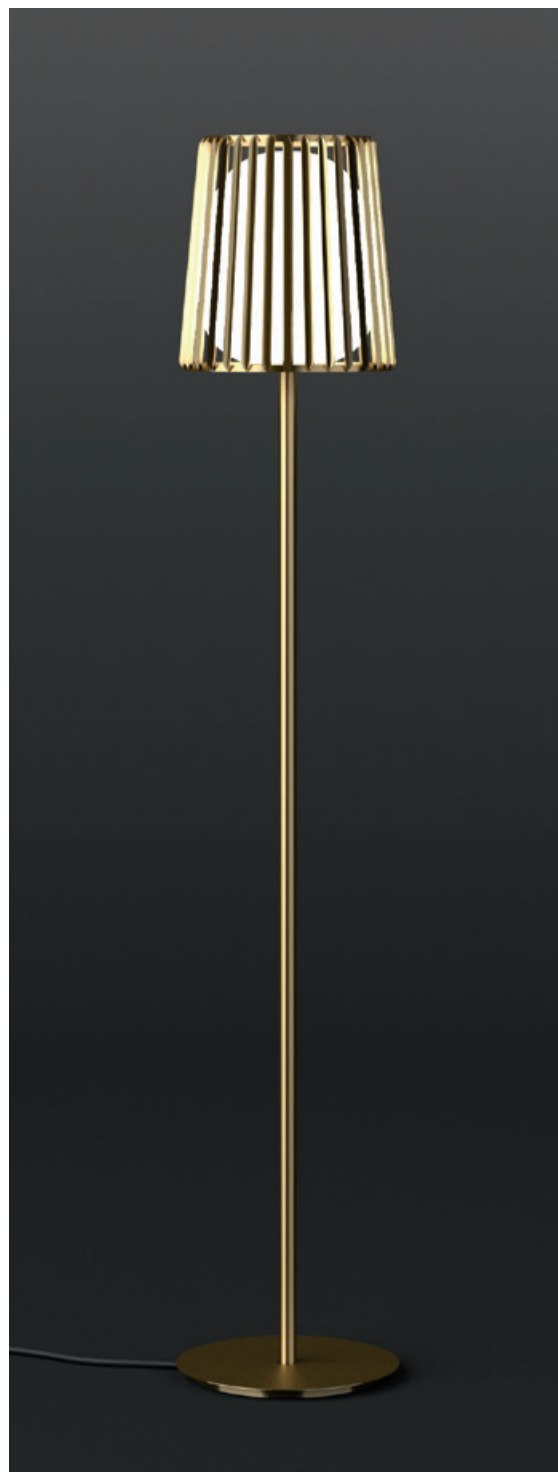




ABOUT Julia by Daniel Becker

A reinterpretation of the classic textile plissé shade. Julia series includes suspensions, chandeliers, wall, floor and table lamps. Each one consists of two shades: the outer is handmade of brass, while the inner is made of translucent glass. Both shades are connected to a classic table lamp in a way that signifies the present archetypal gesture.





ABOUT **Universe with drops** by Jan Pauwels

Illuminating drops fall out of the Universe. By playing with heights this modular version of the Universe becomes modern and frivolous.





ABOUT **Lum** by Estefania Johnson

Creating illuminating walls. This Chilean designer was inspired by Chile's most obtainable raw material, copper. Using basic panels and light panels make it possible to create different design configurations according to the aesthetical and illuminating need of each space.





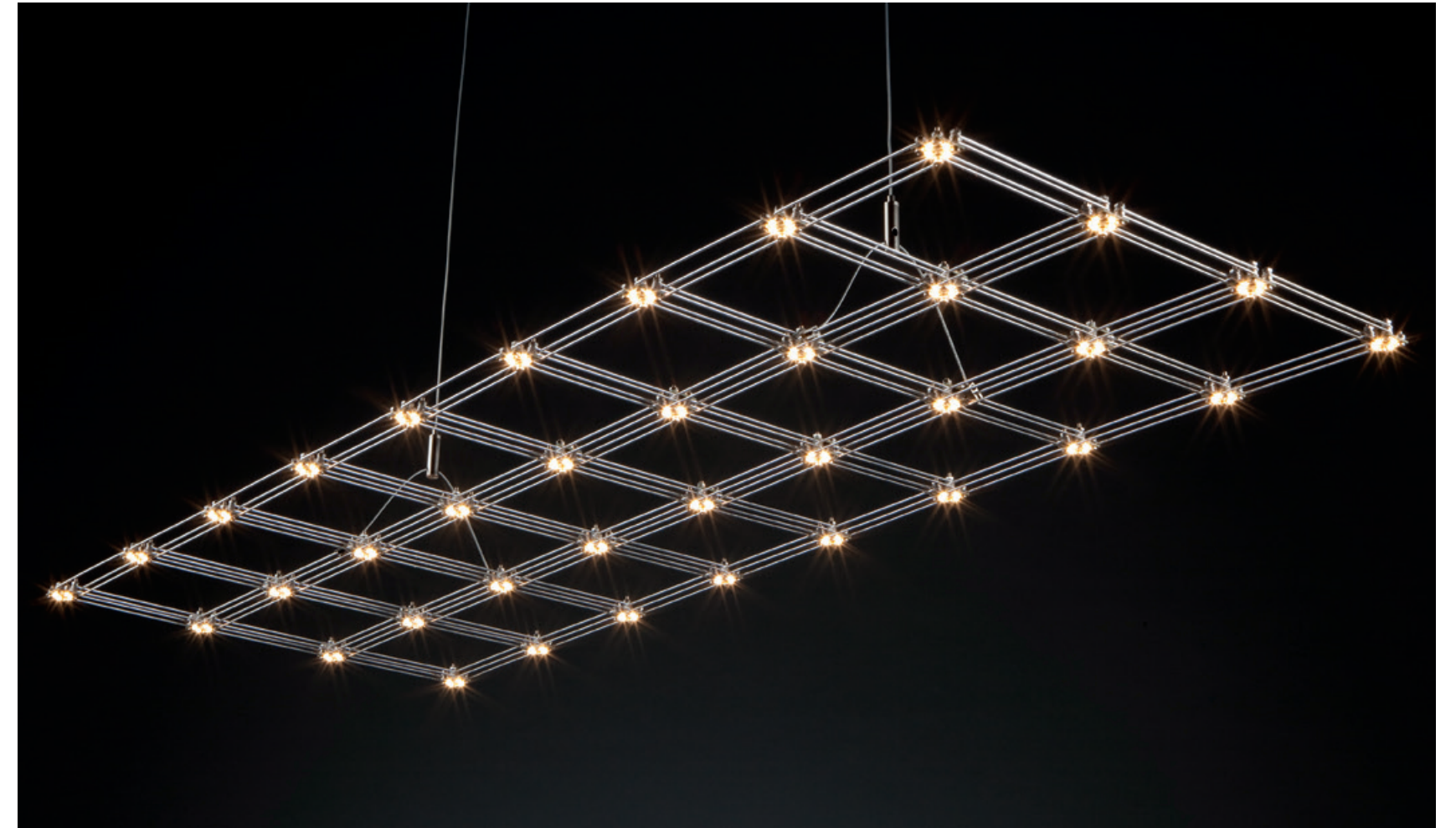
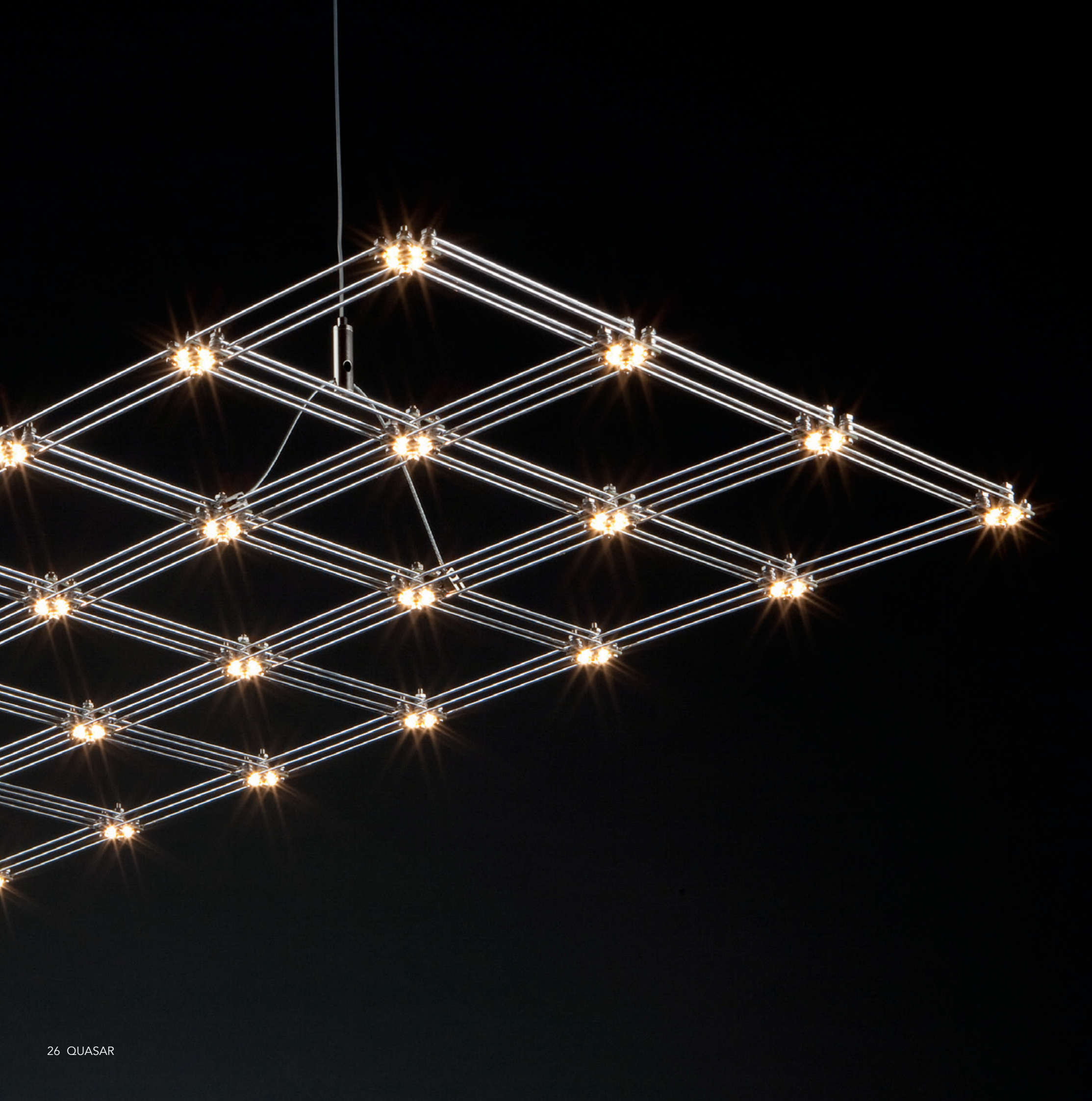
ABOUT Orion by Jan Pauwels

The first fixture of Jan Pauwels where he scaled down the tiny E10 light bulb to an even smaller LED printed circuit board. This asymmetrical light is named after one of the most notorious constellations in the sky.



ABOUT **Frame** by Jan Pauwels

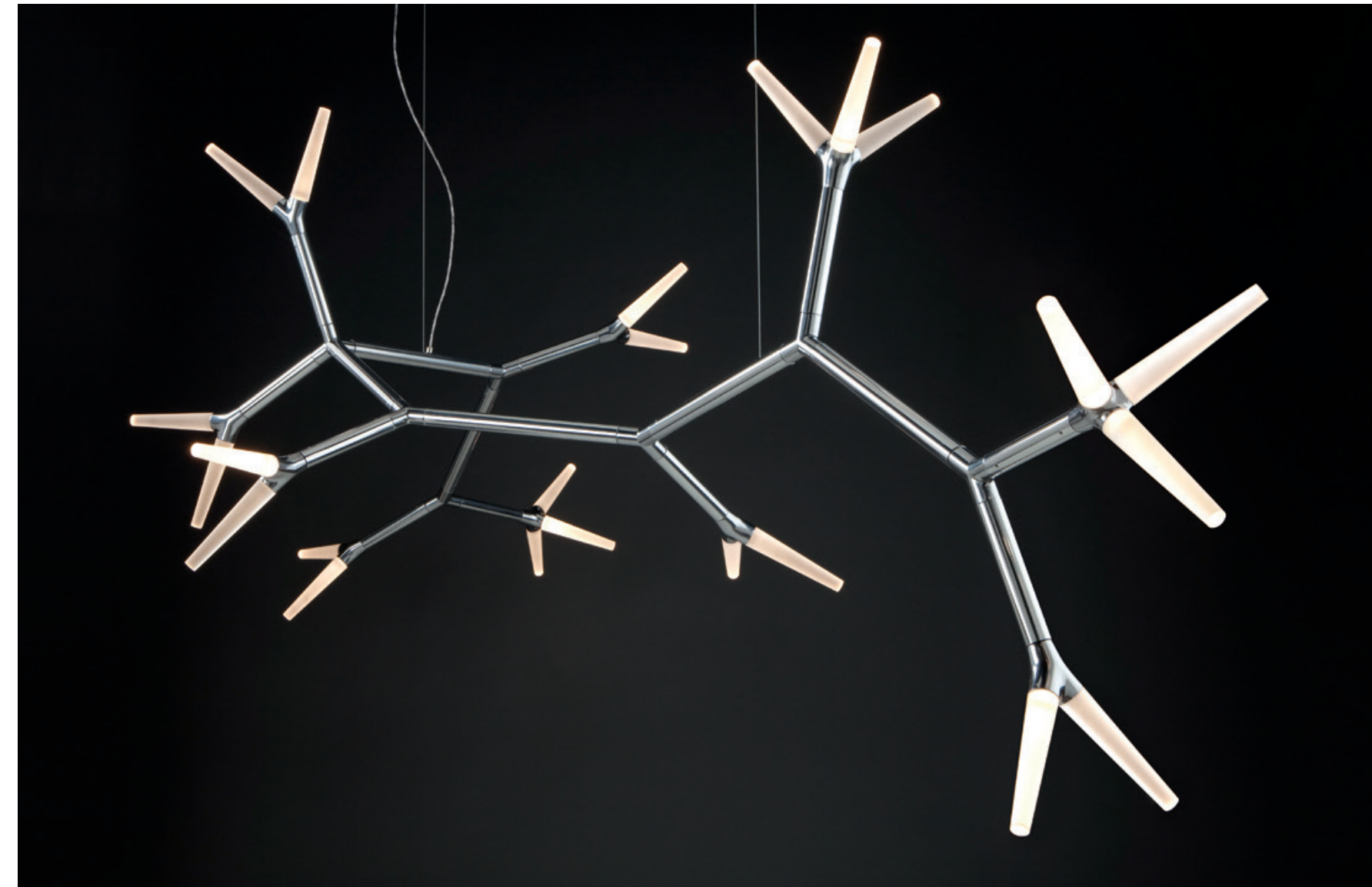
Strong & characteristic light frame. LED circuit boards and tiny metal rods are the only two basic elements of this light fixture.
They give the lamp its structure and shape.





ABOUT **Sparks** by Daniel Becker

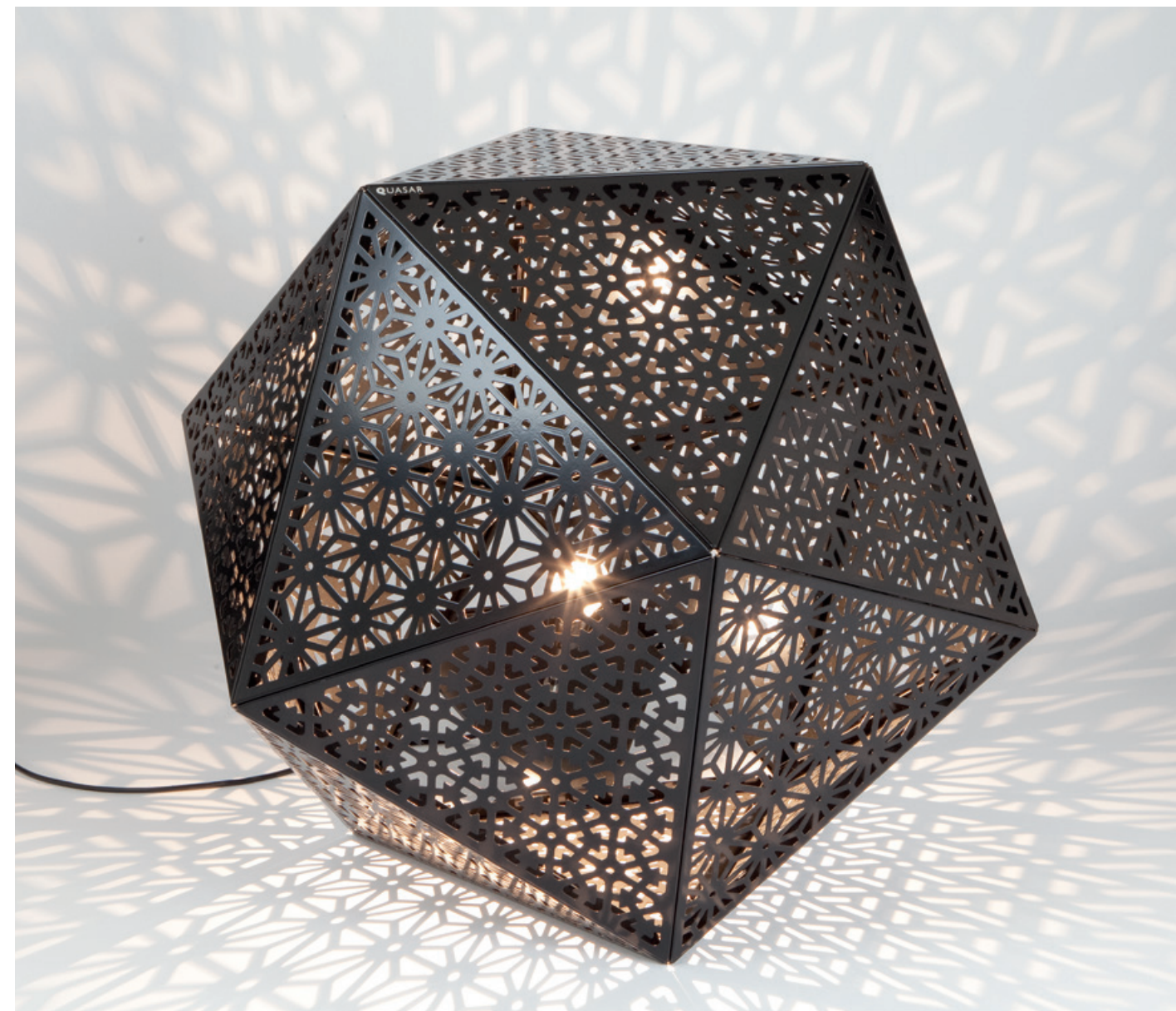
Inspired by a sparkling fire, the designer created a modular lighting system consisting of three different modules with the ability to arrange various configurations to form a three-dimensional structure.





ABOUT Rontonton by Edward van Vliet

Tribute to the shadow. This light gives a fantastic shadow play on the nearby wall or ceiling. Because of the pattern, the lamp is also beautiful when it is switched off. Available as a suspension, floor and table lamp.





ABOUT **Stirrup** by Sybille van Gammeren

The designer was inspired by studfarms & horses. The LED lightsource has been integrated into an abstract Stirrup made of leather and aluminium.





ABOUT **Anemone** by Ralph Frickel

Secrets of the reef. With its bold design the Anemone pendant reflects the elegance and grandeur of the French Empire crystal chandeliers, yet with a modern twist inspired by the underwater world.





ABOUT **Cloche** by Ralph Frickel

Chic like a lady's hat. A tribute to the French Haute Couture of the early twentieth century, and a nod to the classic lampshades of the 1920s. The thickness of the cables increases with the size. Available as suspension, wall, floor and table lamp.





ABOUT **Pelagia** by Ralph Frickel
Inspired by the sea. Handcrafted with hundreds of meters of wire rope, this giant pendant is inspired by the luminescent jellyfish Pelagia Noctiluca.



Quasar holland BV®

Burgstraat 2 4283 GG Giessen The Netherlands

T. +31-(0)183-447887 F. +31-(0)183-448337

export@quasar.nl www.quasar.nl