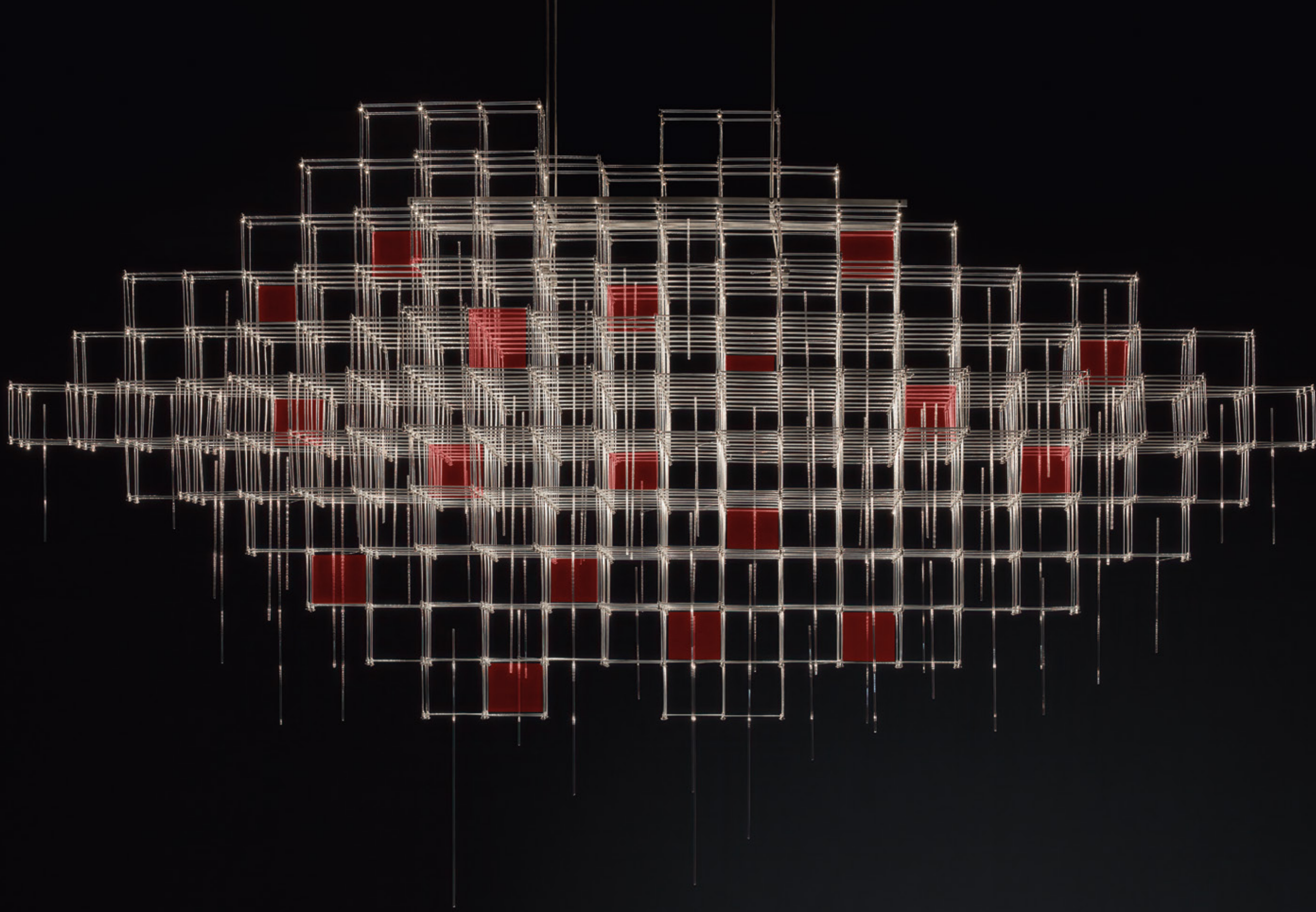


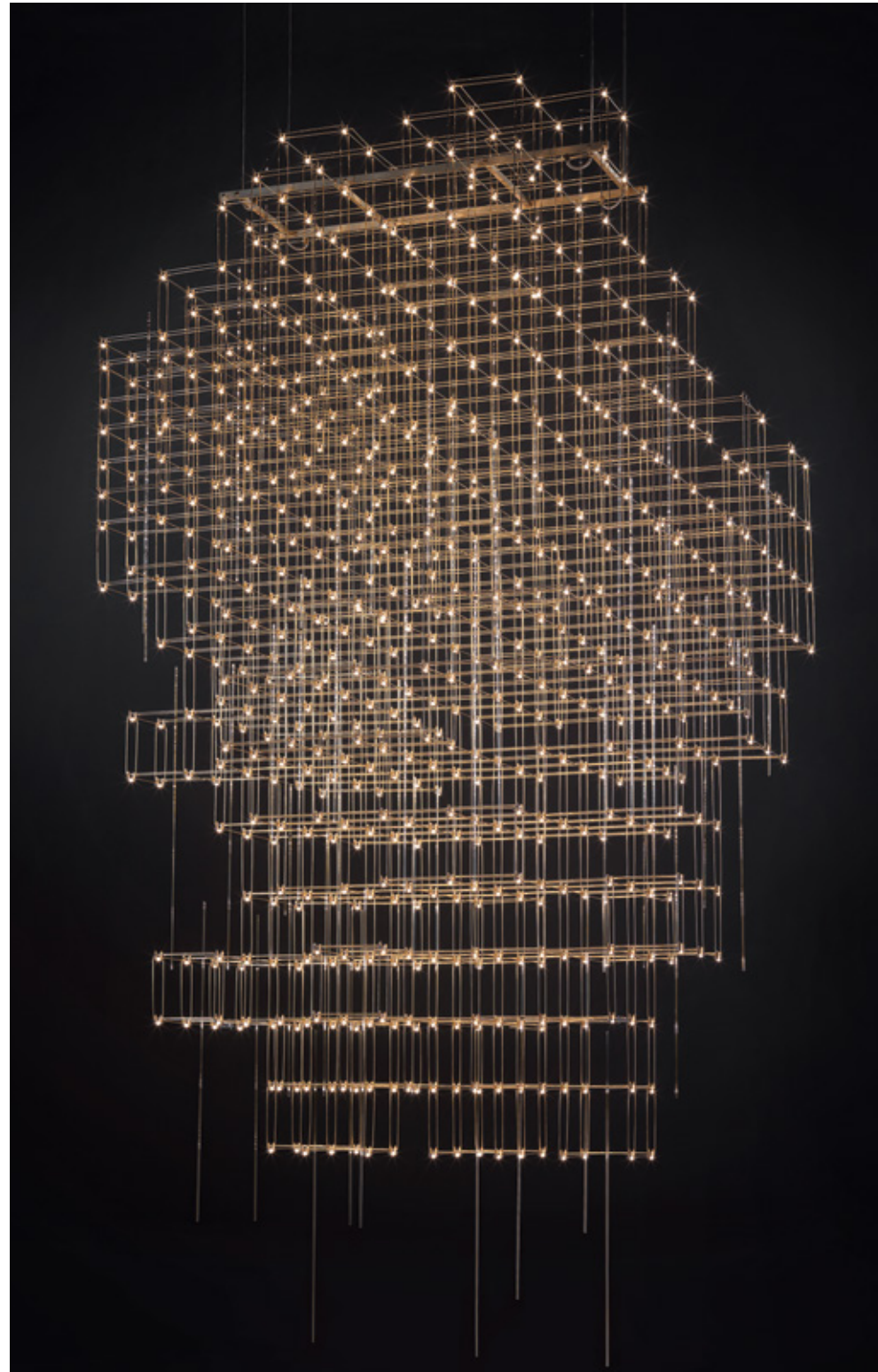
GO ICONIC.

QUASAR



Quasar *[Experience light]* We create iconic lighting. Designed to show character. Handmade with timeless materials. Bespoke to suit any space • ~ crafts lighting solutions that stand out. For residential clients, businesses and architects worldwide • We are proud to be part of a tradition of iconic lighting design. ~ is a family business from Holland, with 30 years of experience in lighting. We collaborate with outspoken designers, who use timeless esthetics to make true lighting statements • Each product is handmade, with robust materials like aluminium, bronze and glass • To us, lighting is about more than illumination. It's about personality. Not just in the lighting fixture itself, but in the space it inhabits • ~ Experience light.





POLLUX

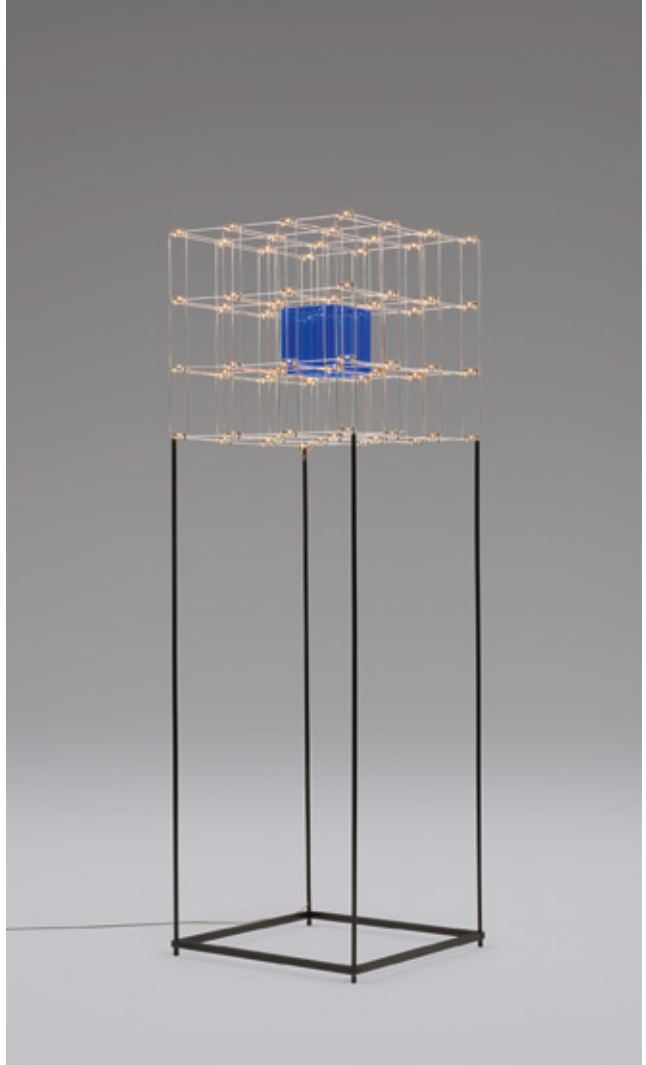
by Jan Pauwels

An amazing architectural light sculpture structured but still harmonious.
Made of random placed LED circuit boards and tiny metal rods. They give the lamp its structure and shape. Each viewpoint is unique because of the asymmetrical shape.





6 QUASAR



COSMOS SQUARE

by Jan Pauwels

Like a piece of art, the Cosmos Square floor lamp will enrich any space. Choose the subtle clean version or make it more quirky by adding a coloured cube. Available in three finishes and cubes offered in three colours.



QUASAR 7



COSMOS GLOBE

by Jan Pauwels

The Cosmos Globe looks structured but still harmonious. Random placed LED circuit boards and tiny metal rods are the only two basic elements of this light fixture. They give the lamp its structure and shape. The circuit boards have LEDs on both sides. 2/3 of the light goes down and 1/3 of the light goes up. Every Cosmos Globe is handmade, making every model unique. Available in various sizes.

The Cosmos Globe floor lamp, with its subtle three footed frame, will enrich any space. Available in three finishes.



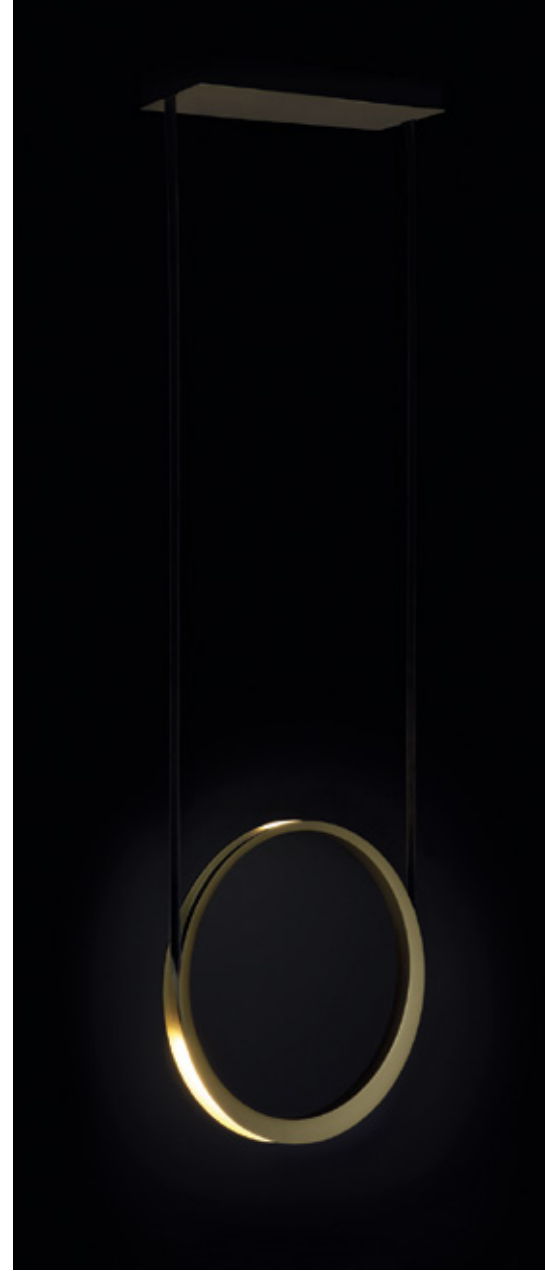


PARKES

by Jan Pauwels

All views of the Parkes are different. Asymmetrical but in balance. Modular placed LED circuit boards and tiny metal rods are the only two basic elements of this light fixture. They give the lamp its structure and shape.





MOONLIGHT

by Hoffmann & Kahleyss

A stunning ambiance is created by the magnificent Moonlight. Use as a single pendant or combine the two available sizes and finishes to create your own imposing feature. The clever use of materials gives the light a luxurious, yet mysterious aura.





MOONLIGHT

by Hoffmann & Kahleiss

Choose either the symmetrical or asymmetrical wall lamp.
Your room will subtly be enhanced by adding this
beautiful decorative, though functional piece.





KENGI

by Studio Sybille

Inspired by the Physalis Alkekengi plant, with a touch of Art Deco.
Organic in look and feel, but strong in detailed construction.
The cotton cable reaches for the ceiling, threaded like a branch,
reaching for the sun.







SWIFT

by Daniel Becker

The Swift will get a different appearance by turning the wings.
The composition will look different and the reflections of the
lights are changing. The Swift is available in two finishes,
white and fossil.

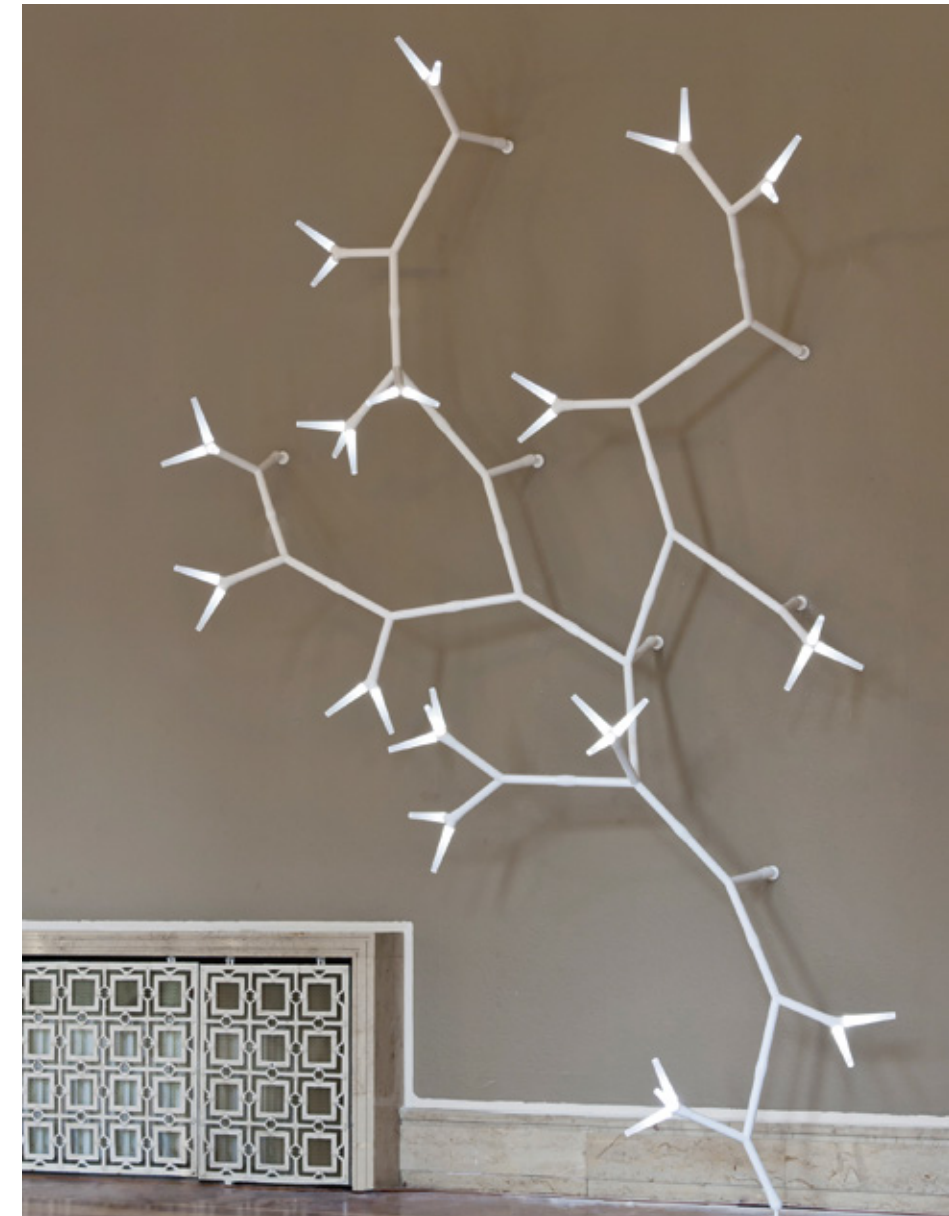




SPARKS

by Daniel Becker

The installation solutions are endless and fit in every architectural situation. The best ambiance will be created by choosing the interior matching finish.



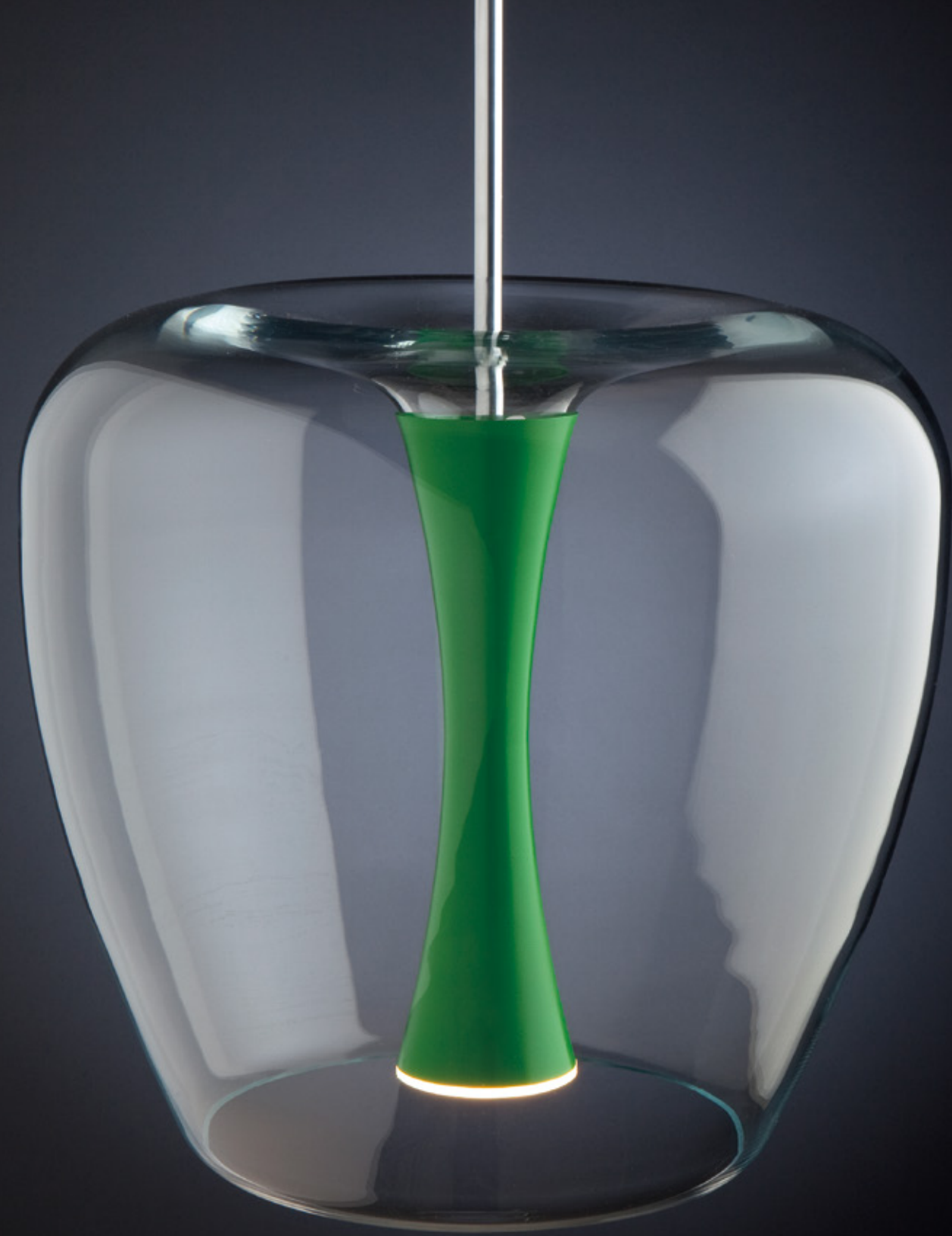


JULIA

by Daniel Becker

A reinterpretation of the classic textile plissé shade. Julia series includes table-, wall and floorlamps as well as chandeliers and several pendant lamps. Each one consists of two shades: the outer is handmade of chrome or brass, while the inner is made of translucent glass. Both shades are connected to a classic table lamp in a way that signifies the present archetypal gesture.





APPLE MOOD

by Malika Novi

The natural beauty of the apple. A transparent apple shaped glass with a solid aluminium core. Available in 2 sizes and many finishes.





APPLE MOOD SMALL

by Malika Novi

The small version of the Apple Mood.
Mix & match by using multiple colours.

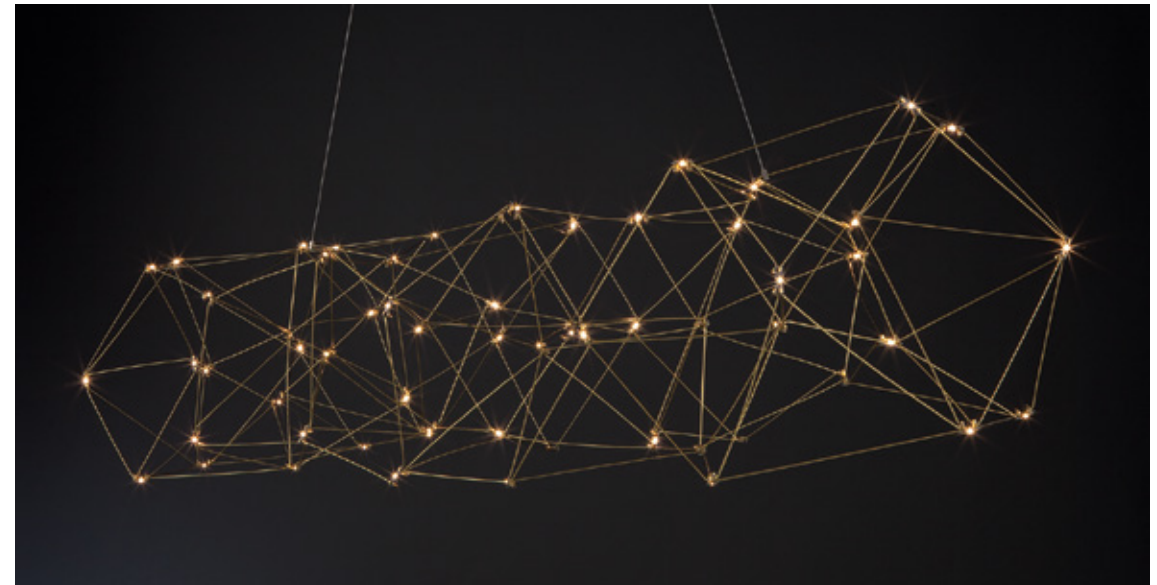




COSMOS

by Jan Pauwels

Cosmos looks random but still harmonious. Random placed LED circuit boards and tiny metal rods are the only two basic elements of this light fixture. They give the lamp its structure and shape. Cosmos is available in 3 finishes.



TESS

by Jan Pauwels

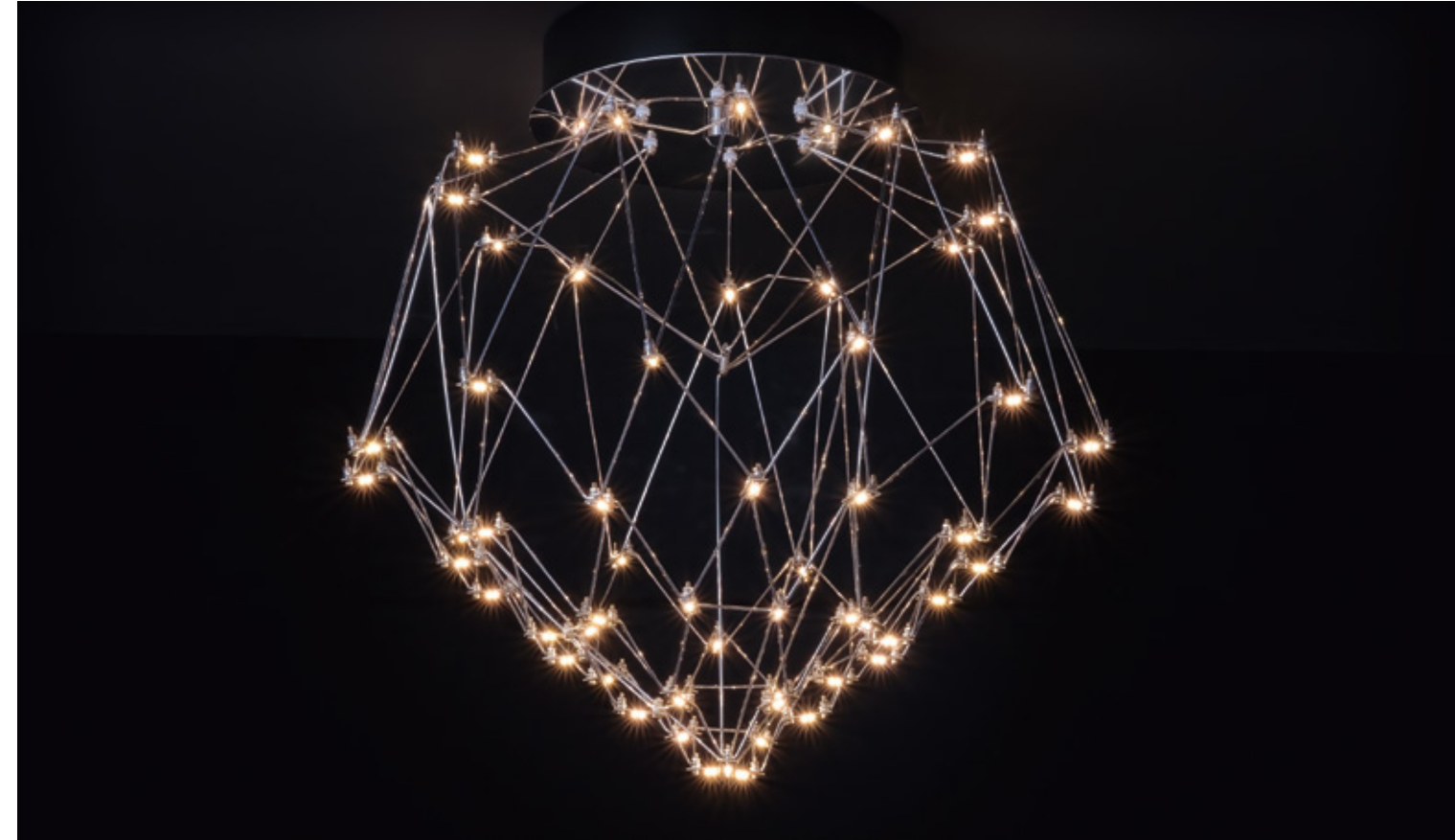
The floating curved satellite is both elegant and organized. LED circuit boards and tint curved metal rods are giving this lamp its structure and shape.
2/3 of the lights goes down and 1/3 goes up.



ADAMAS

by Jan Pauwels

Like a diamond in the rough the Adamas twinkles and is an eyecatcher in every room. Available in 3 finishes as suspension and ceiling lamp.

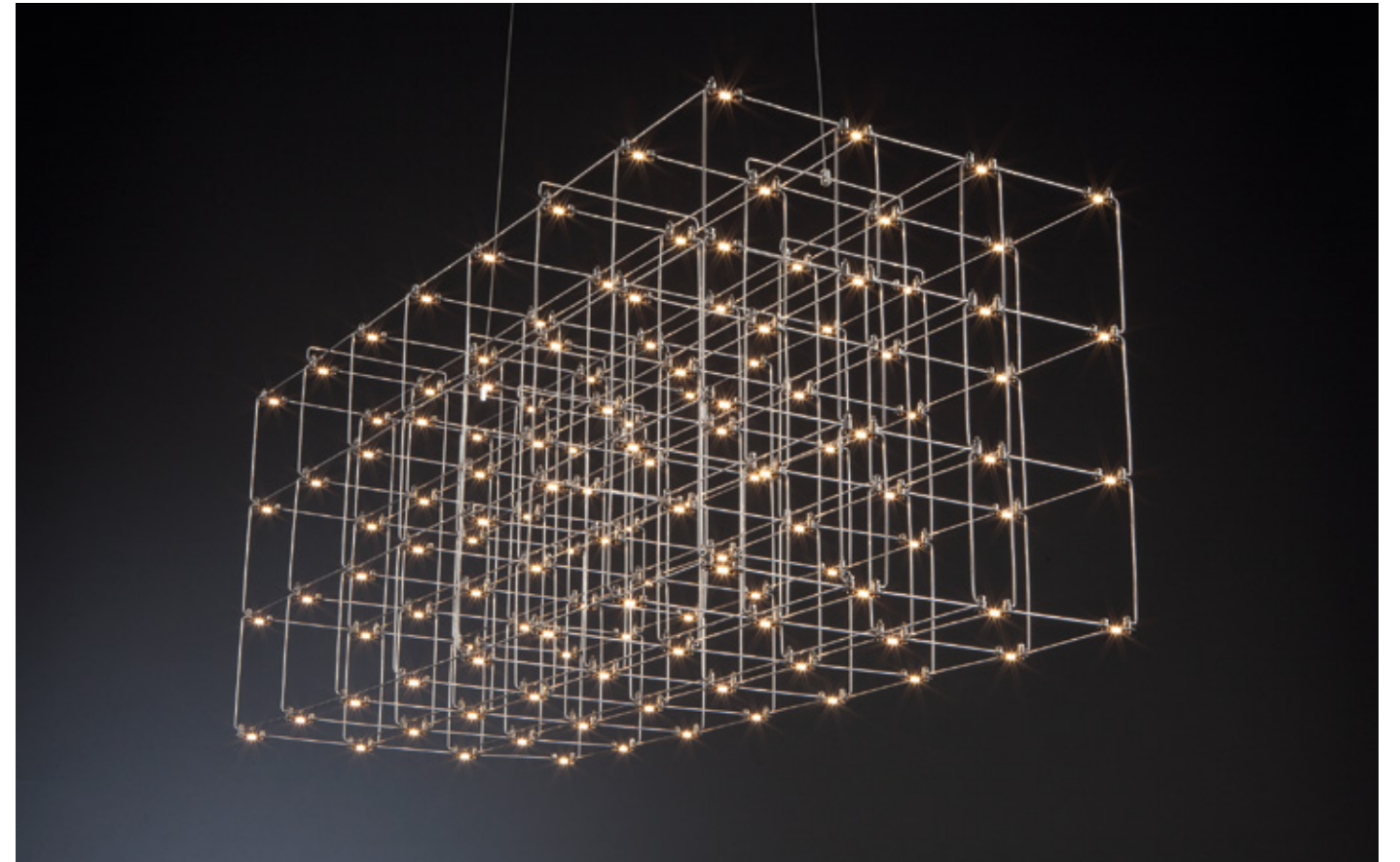




COSMOS SQUARE

by Jan Pauwels

Cosmos Square looks structured but harmonious. Modular placed LED circuit boards and tiny metal rods are the only two basic elements of this light fixture. They give the lamp its structure and shape. The circuit boards have LEDs on both sides. 2/3 of the light is going downwards and 1/3 of the light is going upwards. Available in 3 finishes with or without the tiny sparkling glasstubes.



SPY

by Jan Pauwels

The luxurious atmosphere of the past in a new configuration.
Symmetrical circles in a conical shape. The circuit boards have leds on both sides.
2/3 of the light goes down and 1/3 goes up.



ECLIPSE

by Jan Pauwels

The circle of light. Versatile rings that allow you to create the composition you like.
Thanks to the freedom of number, size, distance and angle between the rings, each
installation will be unique. The Eclipse with its chip on board LEDS has a different
look and feel then the Citadel.





LUM

by Estefania Johnson

Creating illuminating walls. This Chilean designer was inspired by Chile's most obtainable raw material, Copper. Using basic panels makes it possible to create different design configurations according to the aesthetical and illuminating need of each space.



TOSCANA

by Mies & van Gessel

Inspired by the Tuscan roof tiles. Beautiful as they are,
only now in casted aluminium or bronze.
Available in two sizes.



Contributors

Page 10	Random	random.be
Page 12	Carpanelli	carpanelli.com
Page 20-25	Daniel Becker	danielbeckereu
Page 28	Four Points Sheraton Dornbirn / Tobias Pratt	trapp.photography
Page 30	Guerilla Games / Studio Rublek	rublek.com
Page 34	Commerzbank / Markus Dorfmueller	



March 2023

QUASAR holland BV®

Burgstraat 2 4283 GG Giessen The Netherlands
info@quasar.nl www.quasar.nl